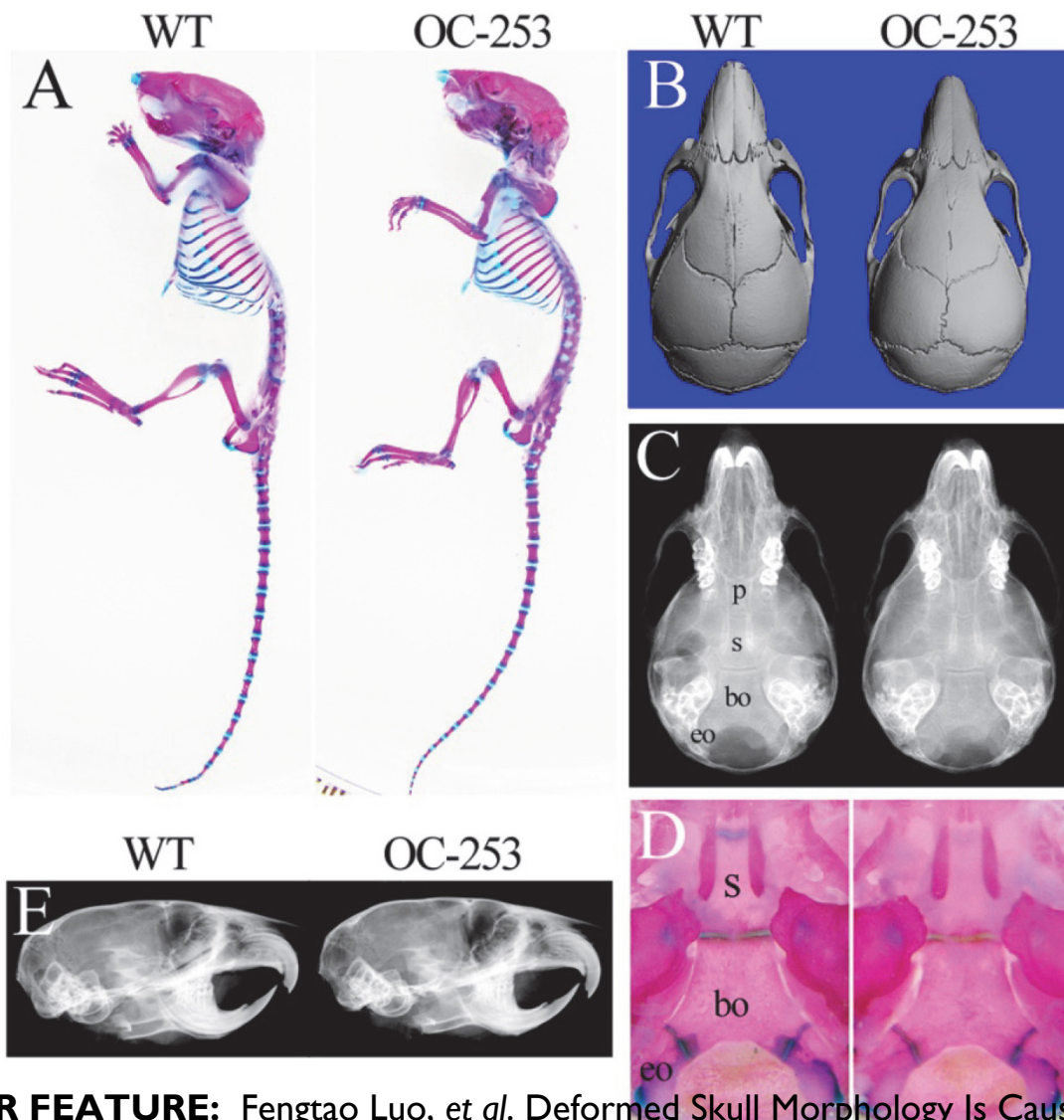


# International Journal of Biological Sciences



**COVER FEATURE:** Fengtao Luo, *et al.* Deformed Skull Morphology Is Caused by the Combined Effects of the Maldevelopment of Calvarias, Cranial Base and Brain in FGFR2-P253R Mice Mimicking Human Apert Syndrome

ISSN 1449-2288



IVYSPRING  
INTERNATIONAL PUBLISHER