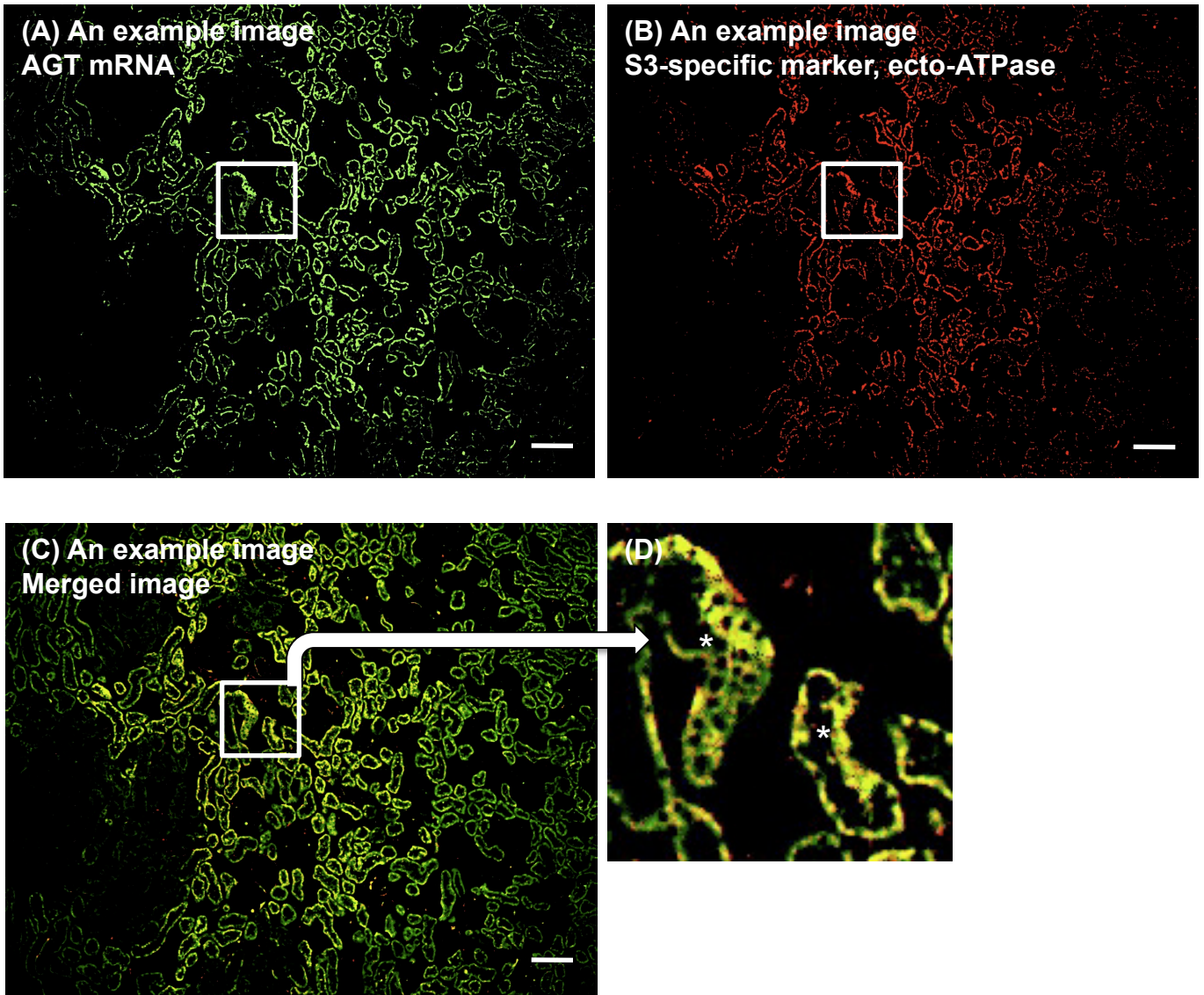
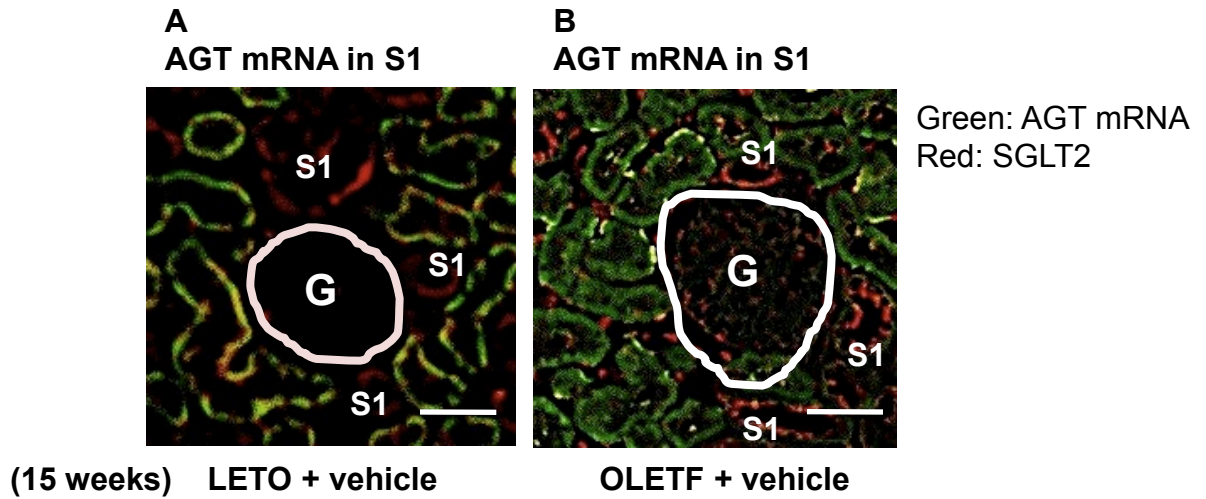


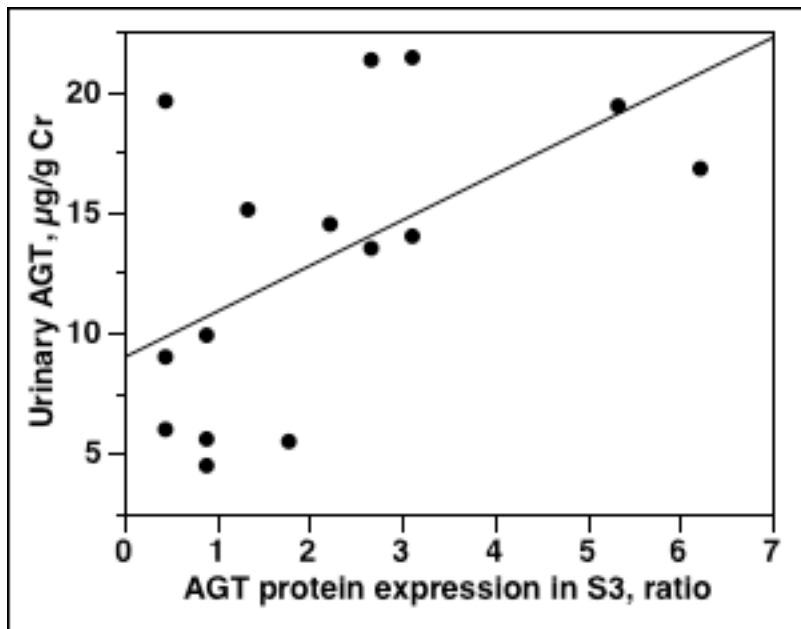
## Supplemental Fig. S1



**Supplemental Fig. S1.** An example of a double-stained image for the AGT localization study. AGT mRNA expression (A; green, magnification x100) and S3-specific marker, ecto-ATPase (B; red, magnification x100) in the kidney of 15-week-old LETO rat are shown. These panels represent the same field. The AGT mRNA expression area (yellow) was measured in the merged picture of AGT mRNA and ecto-ATPase (C; magnification x100, and its close-up image, D). Fifteen consecutive microscopic fields were examined and the averaged expression areas were calculated. The histological sections were evaluated blind by 3 pathologists. Asterisk indicates AGT mRNA in S3 segments. Scale bar, 200  $\mu$ m. AGT, angiotensinogen; S, Segment; ecto-ATPase, ecto-adenosinetriphosphatase; LETO, Long-Evans Tokushima Otsuka.



**Supplemental Fig. S2.** AGT mRNA localization in proximal tubule segment (S) 1 in OLETF and LETO rats. The merged images of AGT mRNA and the S1-specific marker SGLT2 are shown in A (LETO rats) and B (OLETF rats). Magnification, x600 (scale bar, 50  $\mu$ m). AGT: angiotensinogen; LETO: Long-Evans Tokushima Otsuka; OLETF: Otsuka Long-Evans Tokushima Fatty; SGLT2: sodium glucose cotransporter 2; G: glomeruli.



Urinary AGT = 8.08 + 1.89 AGT protein expression in S3  
 $r = 0.5548$ ,  $P = 0.0318$

**Supplemental Fig. S3.** Single-regression analysis for AGT protein expression in segment (S)3 (ratio) with urinary AGT ( $\mu\text{g/g Cr}$ ) using 15-week-old OLETF and LETO data. AGT: angiotensinogen; LETO: Long-Evans Tokushima Otsuka; OLETF: Otsuka Long-Evans Tokushima Fatty.