

Supplemental information

Figure S1

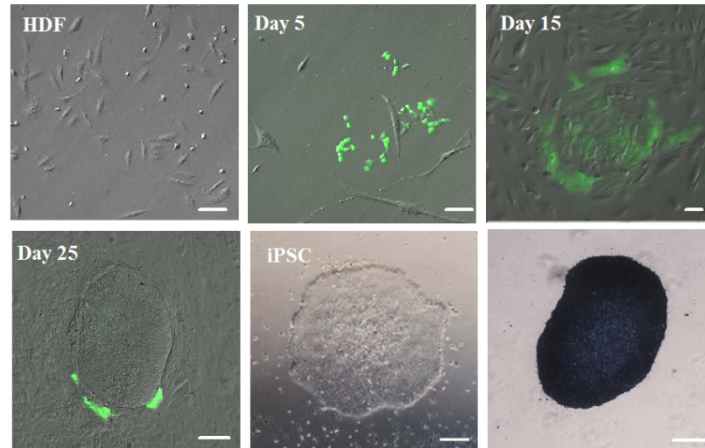


Figure S1. HDFs morphologic changes in the iPSCs derivation at day 5, day 15, and day 25 after electrotransfection with episomal plasmid. GFP represented transformed cells. Scale bar = 20 μ m. iPSC clone was stained with alkaline phosphatase, Scale bar = 200 μ m.

Figure S2

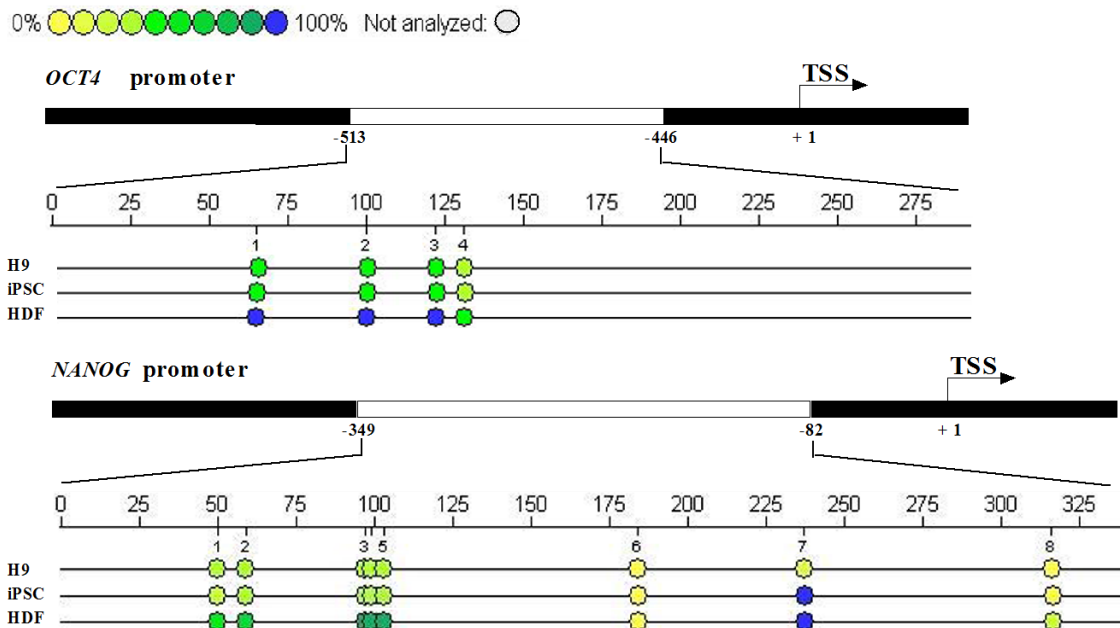


Figure S2. Bisulfite genomic sequencing of the promoter regions of *OCT4* and *NANOG* in H9 cells, iPSCs and HDFs. Different colors indicate the level of methylated CpGs.

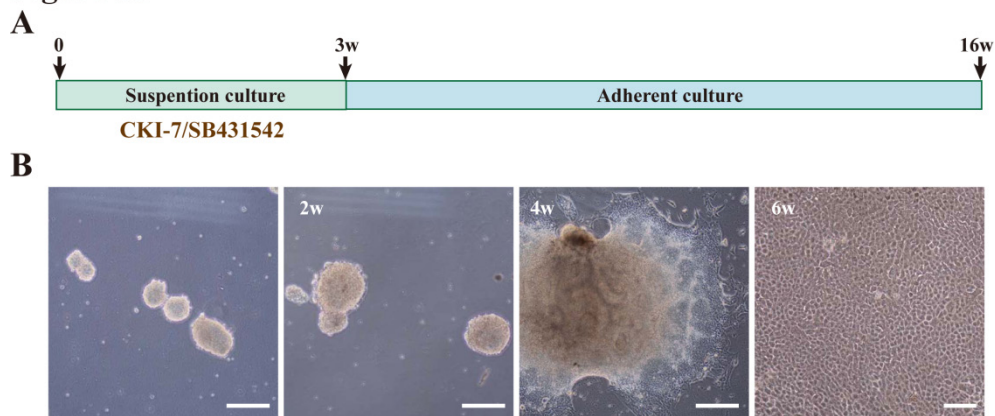
Figure S3

Figure S3. A. Schema of RPE differentiation protocol. B. Morphology of representative floating EB-like structures at 1 and 2 weeks. After that EBs were adhered on matrigel-coated dishes for differentiation. Polygonal cells were occurred at week 6. Scale bar = 200 μm .

Table S1. Primers used for PCR

Gene	Primer Sequence(5' to 3')	AT(°C)	Product(bp)
<i>Endo-OCT4</i>	F- GTACTCCTCGGTCCCTTCC	56	168
	R- CAAAACCCCTGGCACAAACT		
<i>Endo-SOX2</i>	F- CATGTCCCAGCACTACCAGA	56	243
	R- GTCATTTGCTGTGGGTGATG		
<i>Exo-OCT4</i>	F- ACTTCACTGCACTGTACTCCTC	56	212
	R- CATAGCGTAAAAGGAGCAACA		
<i>Exo-SOX2</i>	F- CATGTCCCAGCACTACCAGA	56	145
	R- TACATCCCCAGCCAGTTTGA		
<i>CD9</i>	F- GTGCATGCTIGGGACTGTTCTTCGGCTTC	56	360
	R- CACGCCCCAGCCAAACCACAGCAG		
<i>DPPA5</i>	F- ATATCCC GCCGTGGGTGAAAGTTC	56	243
	R- ACTCAGCCATGGACTGGAGCATCC		
<i>DNMT3B</i>	F- TGCTGCTCACAGGGCCCGATACTTC	56	242
	R- TCCTTTCGAGCTCAGTGCACCACAAAAC		
<i>GRB7</i>	F- CGCCTCTTCAAGTACGGGGTGCAGCTGT	56	241
	R- TGGGCAGGCTGAGGCGGTGGTTTG		
<i>NANOG</i>	F- CAGCCCCGATTCTTCCACCAGTCCC	56	391
	R- CGGAAGATTCCCAGTCGGGTTCCACC		
<i>OTX2</i>	F- CAAAGTGAGACCTGCCAAAAAGA	56	179
	R- TGGACAAGGGATCTGACAGTG		
<i>SIX3</i>	F- CAAGGAGTCTCACGGCAAG	56	163

	R- GCAATGCGTCTTCTGCTCG		
<i>RX1</i>	F- AAGCCTCATCATAGTTTCCAGTC R- AAGCCTCATCATAGTTTCCAGTC	56	168
<i>MITF</i>	F- TTGTCCATCTGCCTCTGAGTAG R- CCATTTAGTAAGTCCACATTCATTTC	56	88
<i>RPE65</i>	F- TACAGAAAGCACTGAGTTGAGC R- CCATTTAGTAAGTCCACATTCATTTC	56	154
<i>TYR</i>	F- GCAAAGCATACCATCAGCTCA R- GCAGTGCATCCATTGACACAT	56	145
<i>SILVER</i>	F- AGGTGCCTTTCTCCGTGAG R- AGCTTCAGCCAGATAGCCACT	56	128
<i>GAPDH</i>	F- GGACTCATGACCACAGTCCATGCC R- TCAGGGATGACCTTGCCCACAG	56	152