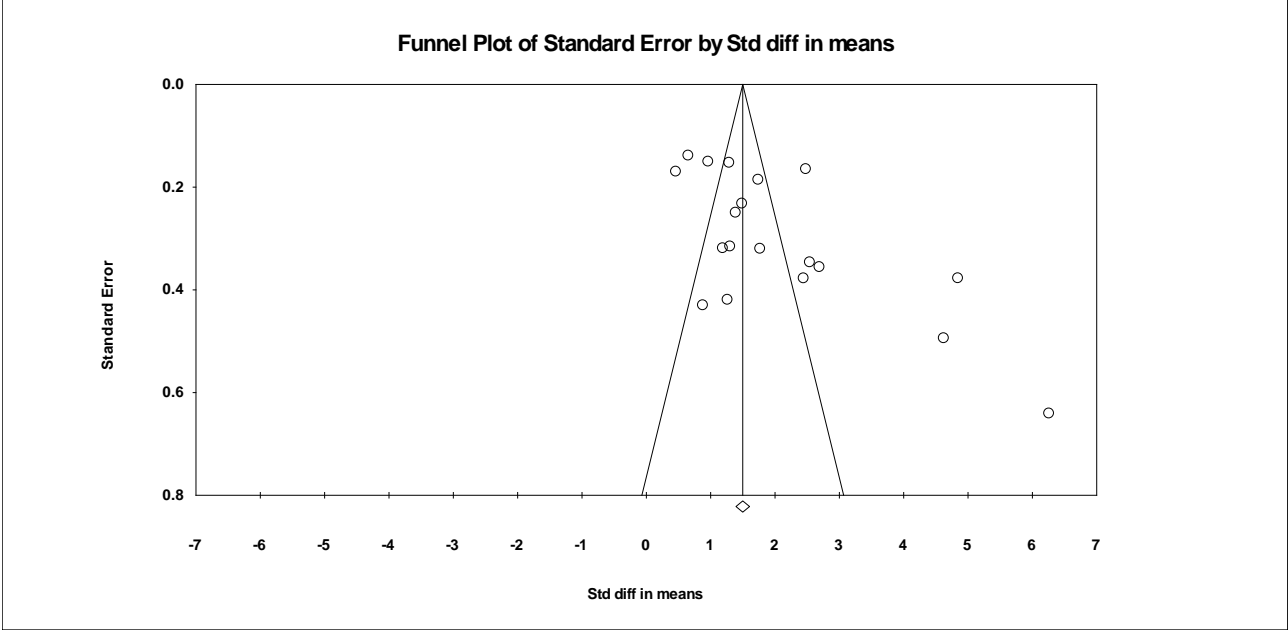


Supplemental table 1. Methodological Quality Assessment by the Newcastle-Ottawa Scale

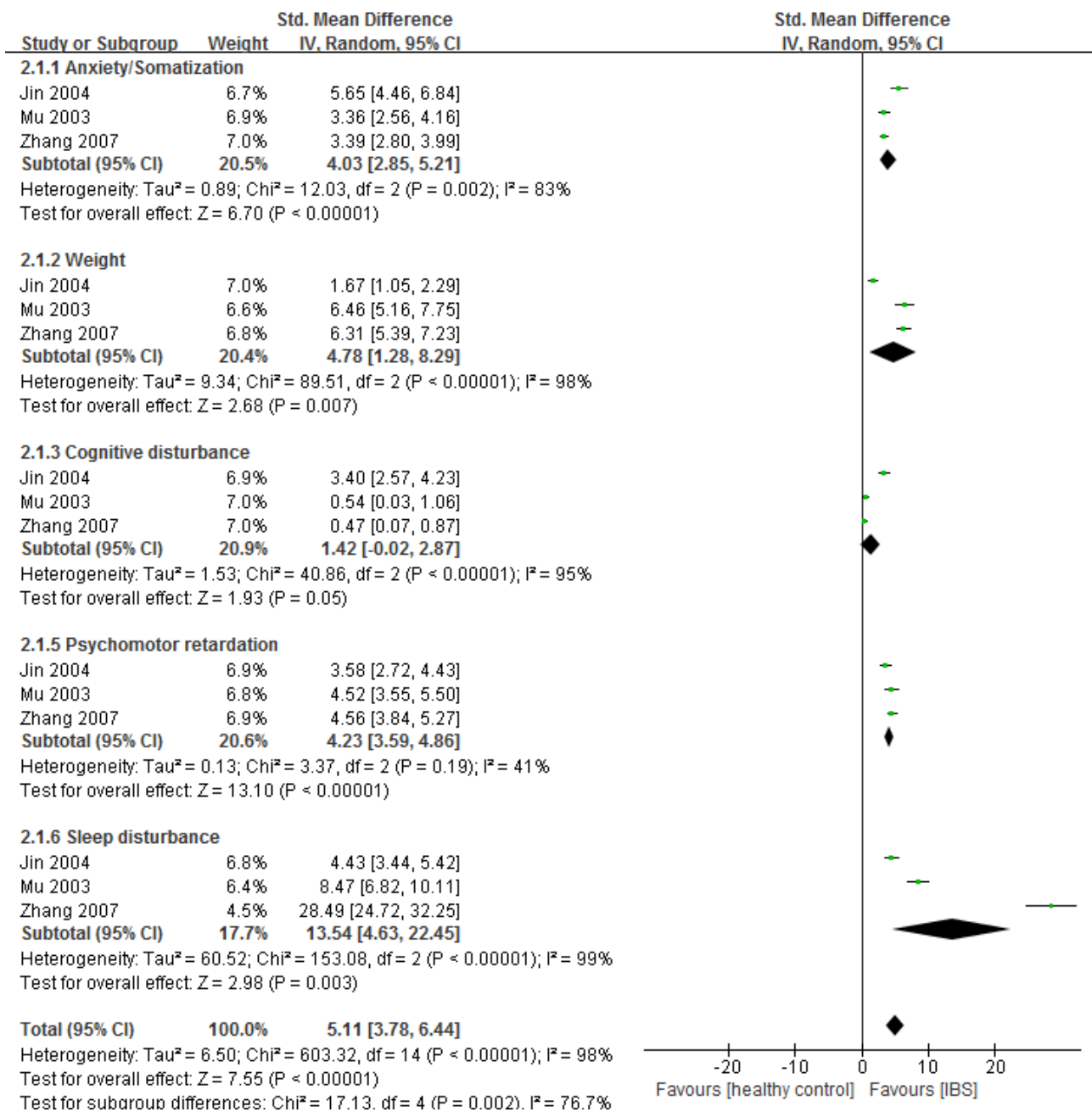
Studies	Selection			Comparability			Exposure			Total quality score
	The case definition is adequate with independent validation	Representativeness of cases	Community Controls	Controls with no history of disease	Cases and controls with comparable gender	Cases and controls with comparable age	Ascertainment of outcome	Same method of ascertainment for cases and controls	Similar non-response rate for both groups	
Akkus et al, 2004	1	1	0	1	0	1	1	1	1	7
Chen and Zou et al, 2007	1	1	0	1	0	0	1	1	1	6
Chen and Wang et al, 2007	1	1	0	1	1	1	1	1	1	8
Gonçalves de Medeiros et al, 2012	1	1	0	1	0	0	1	1	1	6
Hao al, 2015	1	1	0	1	1	1	1	1	1	8
Jin et al, 2004	1	1	0	0	0	0	1	1	1	5
Kilkens et al, 2013	1	1	0	1	1	1	1	1	1	8
Li and Chen et al, 2015	1	1	0	0	1	1	1	1	1	7
Li et al, 2015	1	1	0	1	1	1	1	1	1	8
Liu et al, 2013	1	1	0	0	1	1	1	1	1	7
Mao et al, 2010	1	1	0	1	0	0	1	1	1	6
Mu et al, 2003	1	1	0	0	0	0	1	1	1	5
Shi et al, 2012	1	1	0	1	1	1	1	1	1	8
Shi and Zhang et al, 2012	1	1	0	1	0	0	1	1	1	6
Song et al, 2015	1	1	0	0	1	1	1	1	1	7
Tian et al, 2011	1	0	0	1	1	1	1	1	1	7
Tosic-Golubovic et al, 2010	1	1	1	0	1	1	1	1	1	8
Wan et al, 2005	1	1	0	0	0	1	1	1	1	6
Wang et al, 2012	1	1	0	1	0	0	1	1	1	6
Wang et al, 2014	1	1	0	1	1	1	1	1	1	8
Xu et al, 2012	1	1	0	1	1	1	1	1	1	8

Xu et al, 2014	1	1	0	0	0	0	1	1	1	5
Xu et al, 2017	1	1	0	1	1	1	1	1	1	8
Zhang et al, 2007	1	0	0	1	0	0	1	1	1	5

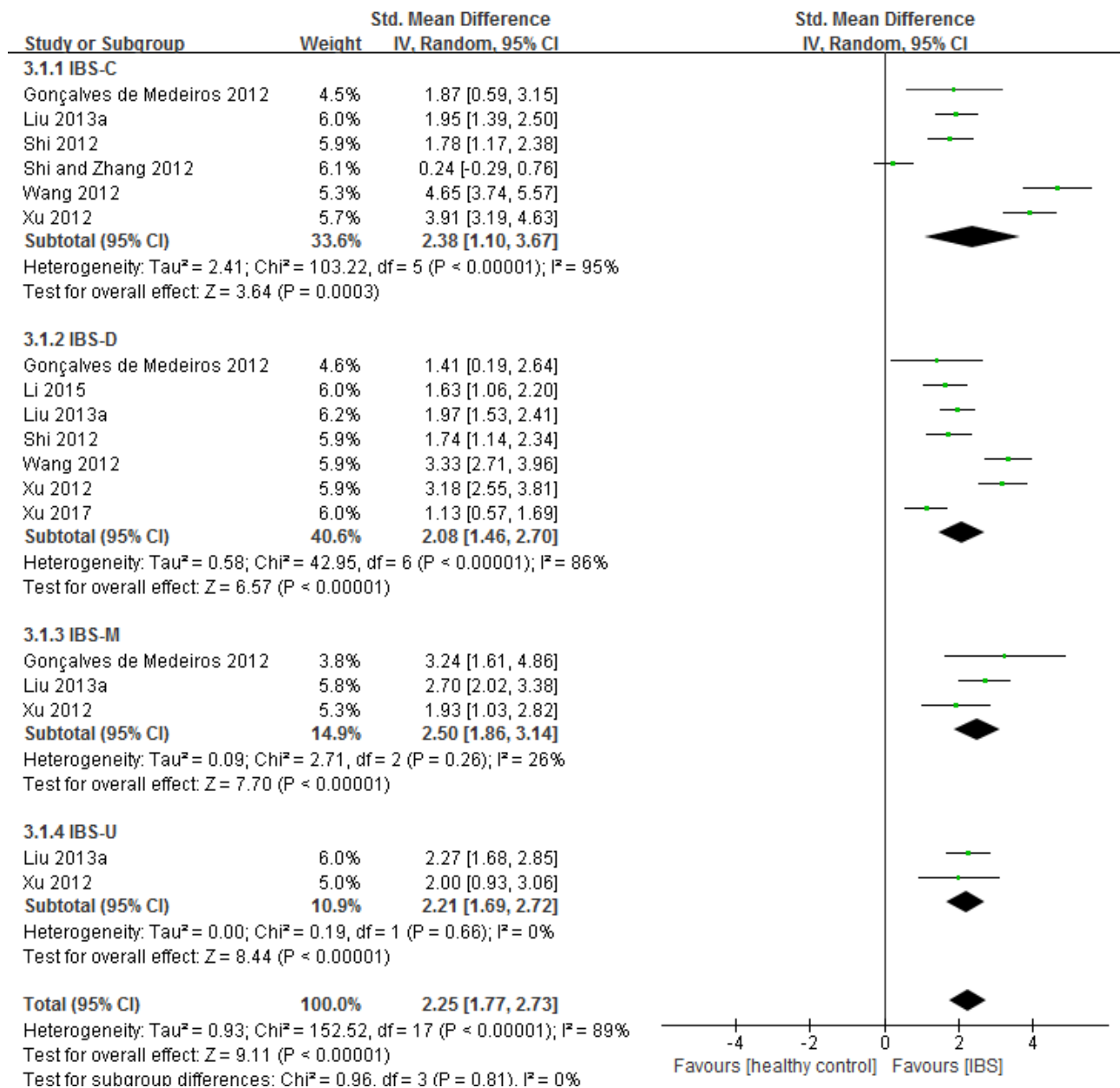
Supplemental figure 1. Funnel plot



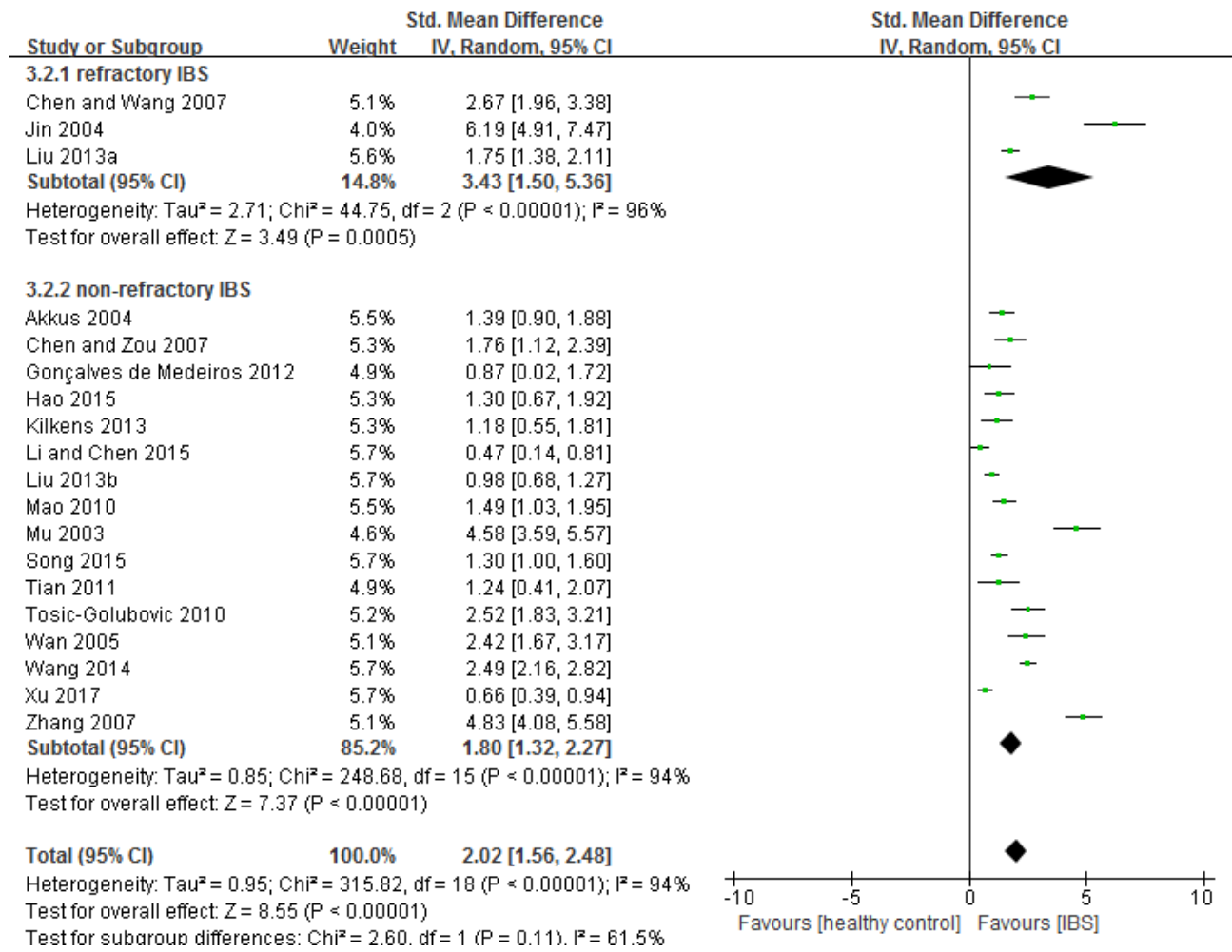
Supplemental figure 2. Depression symptoms of IBS patients: forest plot of HAMD factors



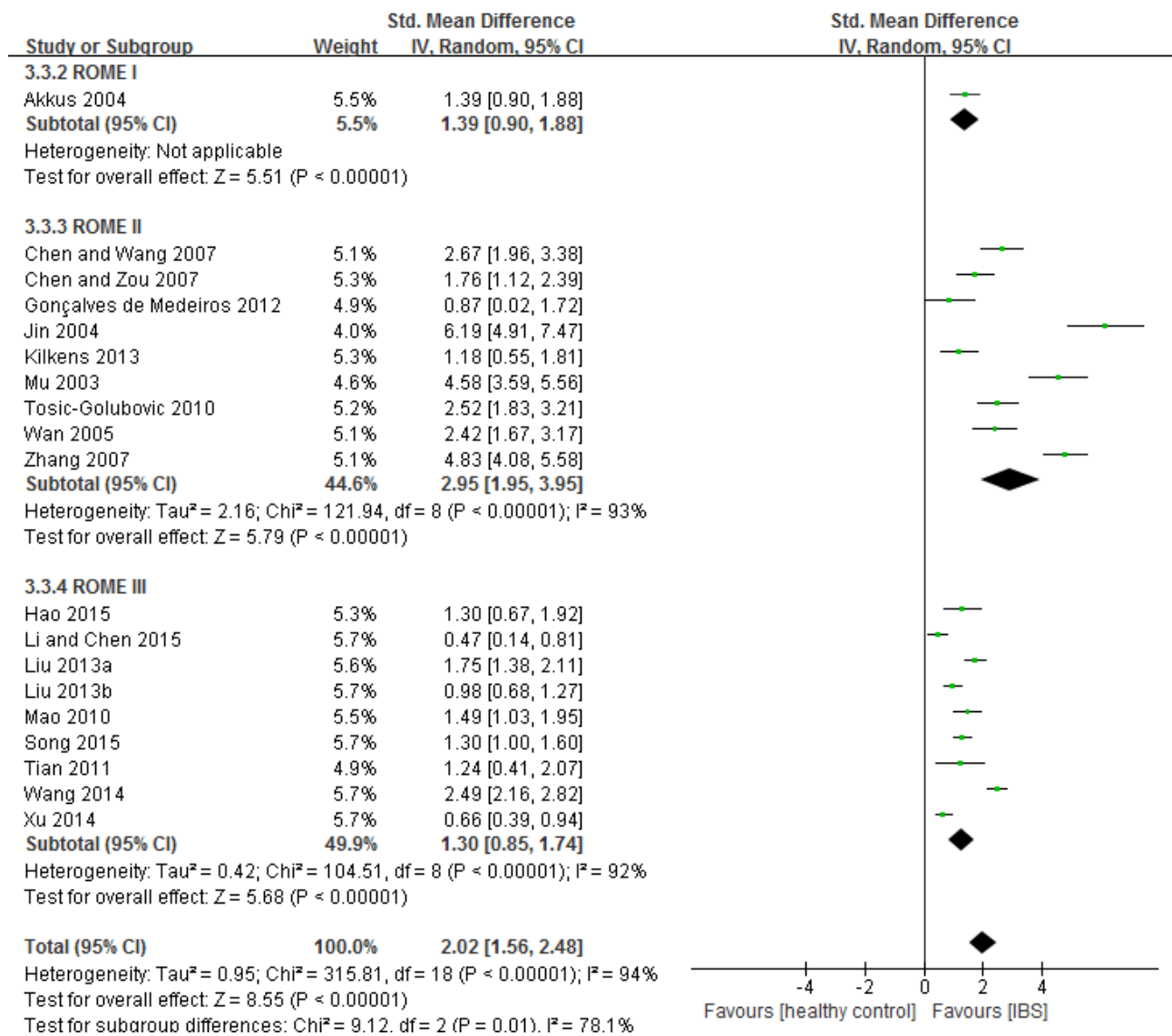
Supplemental figure 3. Forest plot of depressive symptoms in patients with different IBS subtypes vs. healthy controls



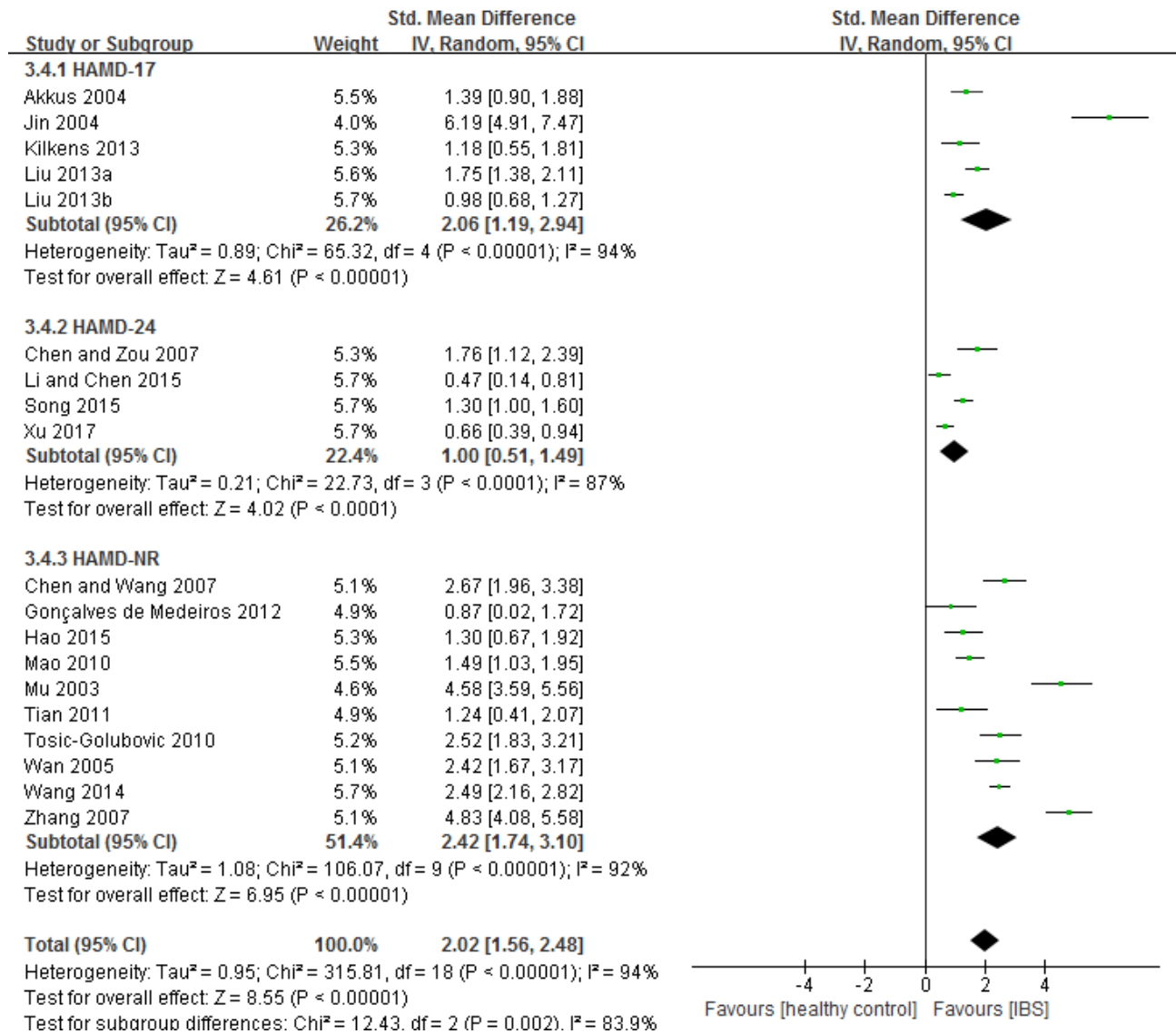
Supplemental figure 4. Forest plot of depressive symptoms in refractory of IBS patients vs. healthy controls



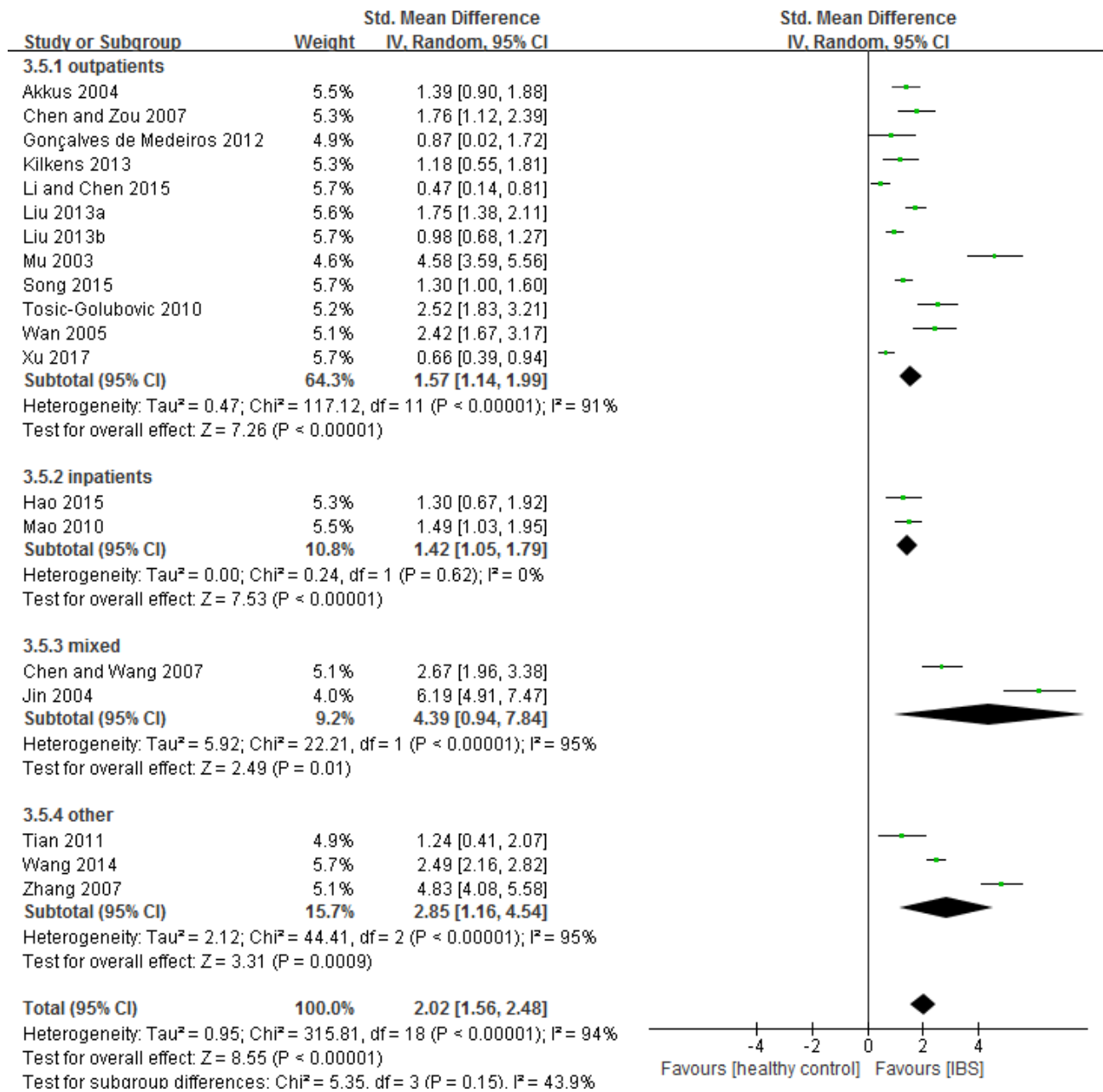
Supplemental figure 5. Forest plot of depressive symptoms in IBS patients using different diagnostic criteria



Supplemental figure 6. Forest plot of depressive symptoms assessed by different HAMD versions in IBS patients



Supplemental figure 7. Forest plot of depressive symptoms of IBS patients from different sources



Supplemental figure 8. Forest plot of depressive symptoms in IBS patients in different countries

