

Fig. S1. The expression of SMARCA2 and SMARCA4 in pancreatic cancer from GEO database. The different mRNA expression levels of SMARCA2 (A) or SMARCA4 (B) in pancreatic cancer tissues and normal tissues from three GEO databases. The values of SMARCA2 and SMARCA4 have undergone log₁₀ conversion in GSE11838.

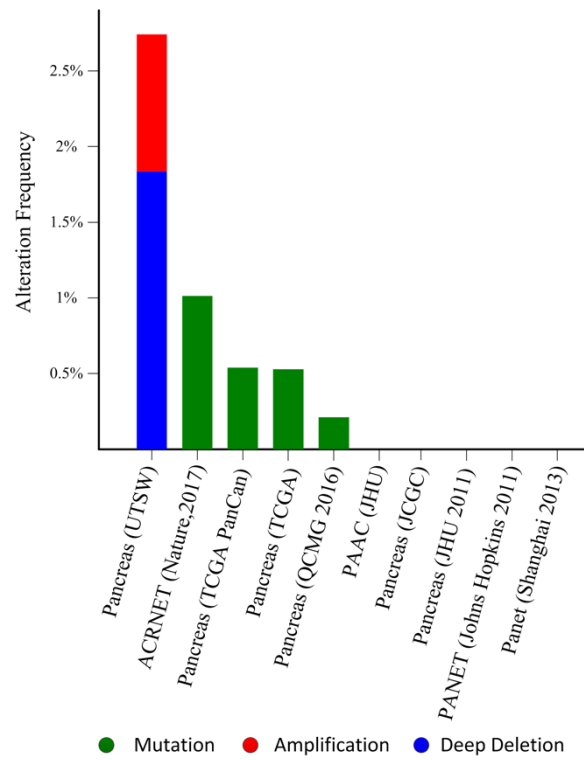


Fig. S2. The mutation status and amplification of SMARCAD1 in pancreatic cancer. Data is derived from the cBioPortal data platform (<http://www.cbioportal.org/>).

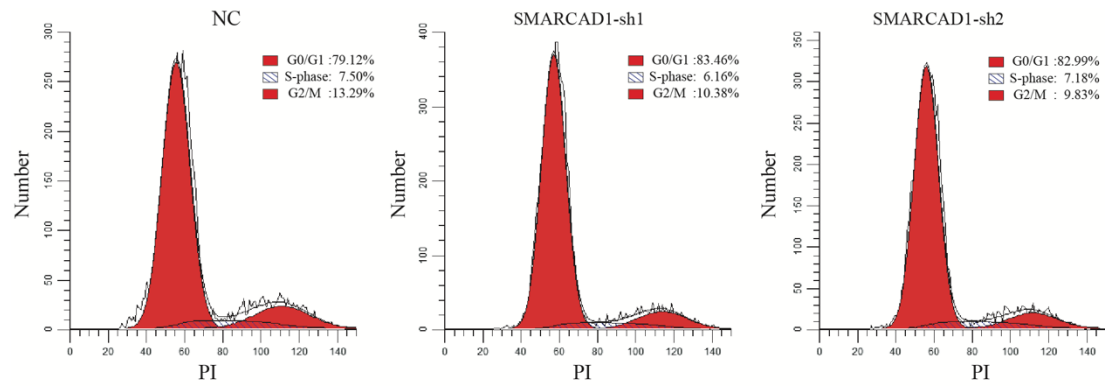


Fig. S3. SMARCAD1 knockdown arrests PANC-1 cells at G1 phase. Flow cytometry analysis of cell cycle revealed that slight accumulation of PC cells in G1 phase and reduction in S-phase following SMARCAD1 knockdown.

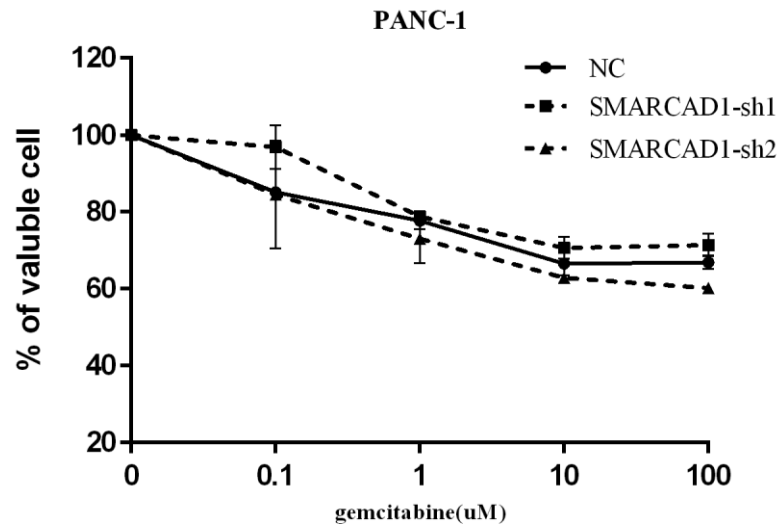


Fig. S4. SMARCAD1 has no significant effect on sensitivity of PANC-1 cells to gemcitabine.

PANC-1 cells infected by sh-*SMARCAD1*-NC or sh-*SMARCAD1* were exposed to 0.1 μ M, 1 μ M, 10 μ M and 100 μ M gemcitabine for 48 h respectively, and viability of cells were assessed by CCK8 assay at 450nm. The values of day 0 were normalized to the level (=100%).