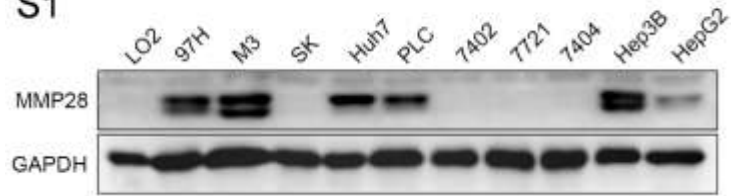


Figure S1, The expression of MMP28 was detected by western blot in a panel of HCC cell lines.

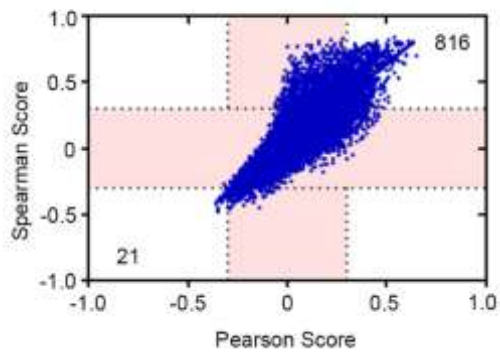
Figure S2, The correlations of MMP28 with all genes from TCGA database.

Figure S3, KEGG enrichment for the genes that strongly correlated with MMP28.

S1



S2



S3

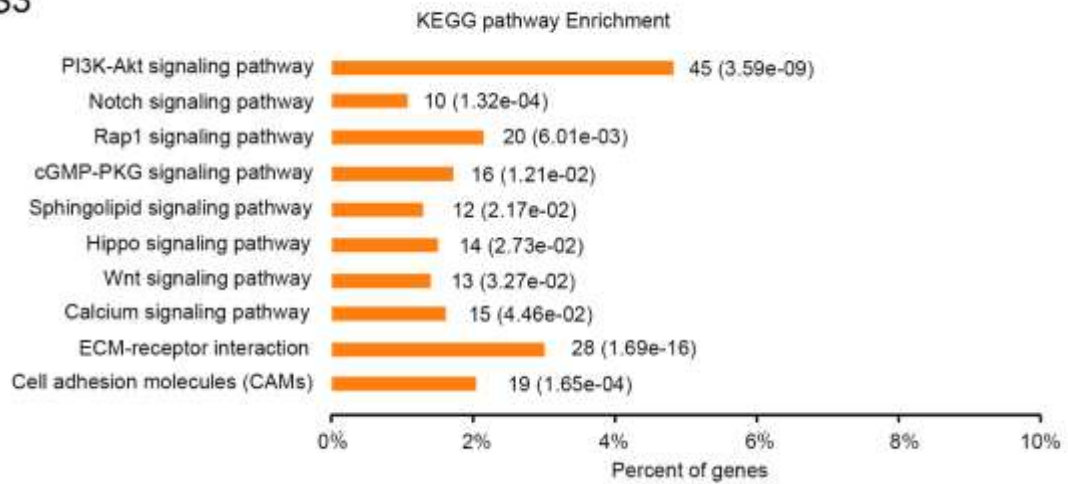


Table S1, Genes correlated with MMP28 in TCGA database and their KEGG enrichment.

	<b>Pathway Name</b>	<b>Pathway ID</b>	<b>Pvalue</b>	<b>Pvalue_adjusted</b>	<b>Count</b>	<b>Pop Hit</b>
1	ECM-receptor interaction	hsa04512	1.69E-16	4.03E-14	28	82
2	PI3K-Akt signaling pathway	hsa04151	3.59E-09	0.000000285	45	342
3	Notch signaling pathway	hsa04330	0.000132	0.00225	10	48
4	Cell adhesion molecules (CAMs)	hsa04514	0.000165	0.00263	19	146
5	Rap1 signaling pathway	hsa04015	0.00601	0.053	20	211
6	cGMP-PKG signaling pathway	hsa04022	0.0121	0.0845	16	167
7	Sphingolipid signaling pathway	hsa04071	0.0217	0.14	12	121
8	Hippo signaling pathway	hsa04390	0.0273	0.171	14	154
9	Wnt signaling pathway	hsa04310	0.0327	0.185	13	143
10	Calcium signaling pathway	hsa04020	0.0446	0.221	15	180