

**Supplementary Table 1:**Part of differentially expressed mRNAs in Hep3B cells

transfected with Lv-ZEB2-19 determined by RNA transcriptome sequencing

Gene ID	Gene Symbol	Type	log2 (OE / NC)	FDR (OE / NC)
100533467	BIVM-ERCC5	mRNA	-12.90595104	7.20E-22
100529097	RPL36A-HNRNPH2	mRNA	-12.8255551	1.10E-20
720	C4A	mRNA	-11.90839262	1.33E-10
100293534	C4B_2	mRNA	-11.57506646	3.12E-08
110354863	ZNF660-ZNF197	mRNA	-11.5028318	6.01E-08
100526832	PHOSPHO2-KLHL23	mRNA	-10.84235034	7.79E-05
2556	GABRA3	mRNA	-10.64385619	2.68E-04
116255	MOGAT1	mRNA	-10.45121111	9.15E-04
27156	RSPH14	mRNA	-10.45121111	9.13E-04
54474	KRT20	mRNA	-4.392317423	1.03E-04
100302652	GPR75-ASB3	mRNA	-4.286771649	4.95E-04
6450	SH3BGR	mRNA	-2.963736456	2.96E-04
6920	TCEA3	mRNA	-2.700439718	4.55E-04
4105	MAGEA6	mRNA	-2.460440144	8.41E-10
100529063	BCL2L2-PABPN1	mRNA	-2.08277018	4.81E-14

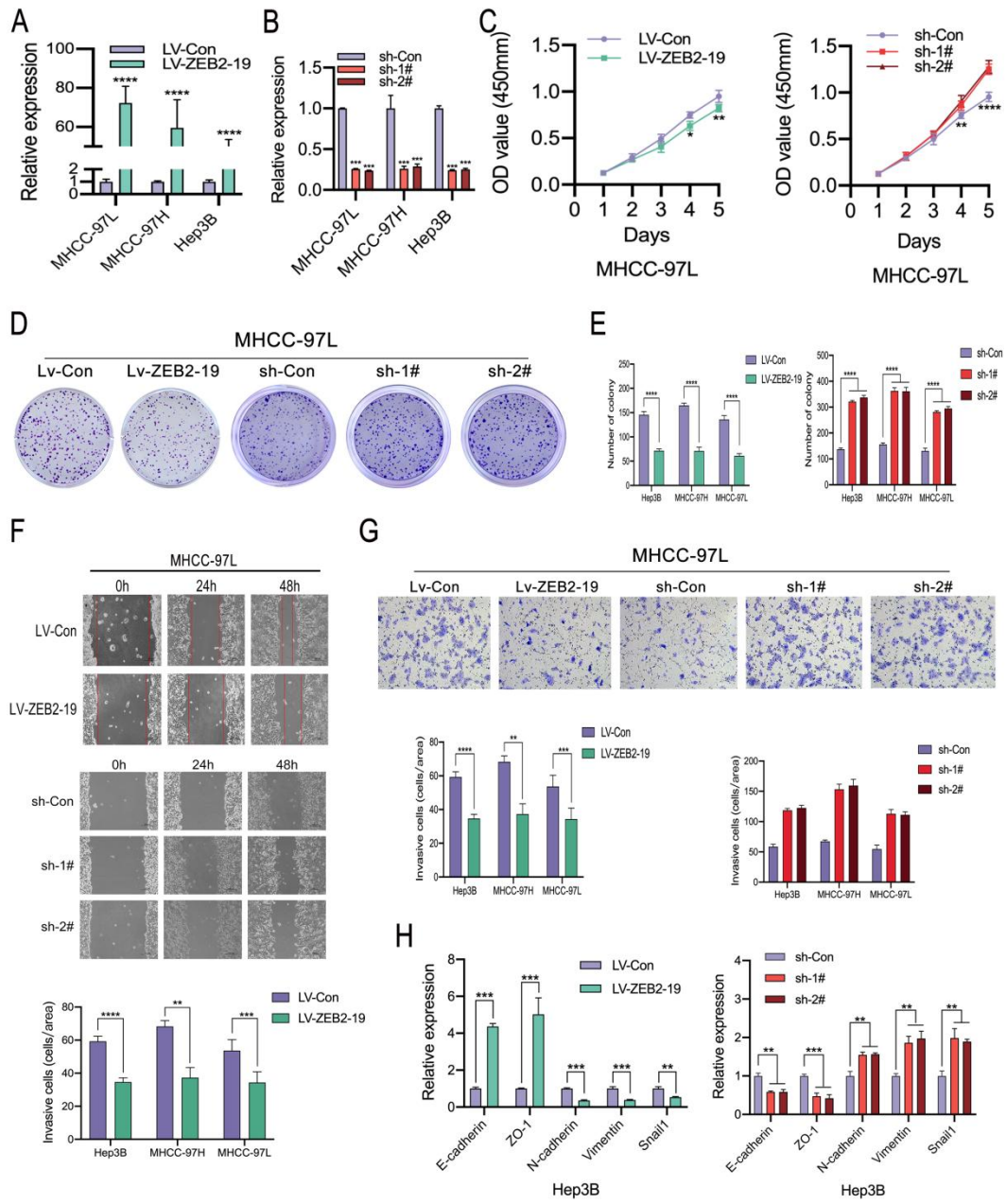
**Supplementary Table 2:** Sequences of primers used in RT-qPCR assay.

Target	Sequence (5'-3')
Lnc-ZEB2-19	Forward: CCGAAAGGAGGAGAAGCA Reverse: TGGCAGAAGGTGAGGGTG
RSPH14	Forward: TGCCACCCAGATTACCACTG Reverse: AGGTTCTCCATACAGCCTATGT
TRA2A	Forward: AGGTCGAGGTCAAGGAGACAT Reverse: CGCCGGTATTCTGGTGTATATG
CDH1	Forward: CGAGAGCTACACGTTACGG Reverse: GGGTGTGCGAGGGAAAAATAGG
CDH2	Forward: AGCCAACCTTAACTGAGGAGT Reverse: GGCAAGTTGATTGGAGGGATG
VIM	Forward: AGTCCACTGAGTACCGGAGAC Reverse: CATTTCACGCATCTGGCGTTC
SNAIL1	Forward: TCGGAAGCCTAACTACAGCGA Reverse: AGATGAGCATTGGCAGCGAG
ZO-1	Forward: CAGCTTGATACCTGTGAATGGG Reverse: TATCTGTGGTCGTGTGGGACT
GABRA3	Forward: TTACACCTTTGCATACAGAACCC Reverse: TTTACGATTACACCCAGACTGC
SH3BGR	Forward: TGTGACAAGGAATATGTGAGCC Reverse: TGAGCCCTCAGATTTGACCTG
KRT20	Forward: CTCGCTTCGGCAGCACA Reverse: AACGCTTCACGAATTTGCGT
TCEA3	Forward: CAAGAGGCGCAAACAAGCC Reverse: GGTTGGCAATACCGTCATCC
MAGEA6	Forward: TCGGAAGCCTAACTACAGCGA Reverse: AGATGAGCATTGGCAGCGAG
GAPDH	Forward: GGAGCGAGATCCCTCCAAAAT Reverse: GGCTGTTGTCATACTTCTCATGG

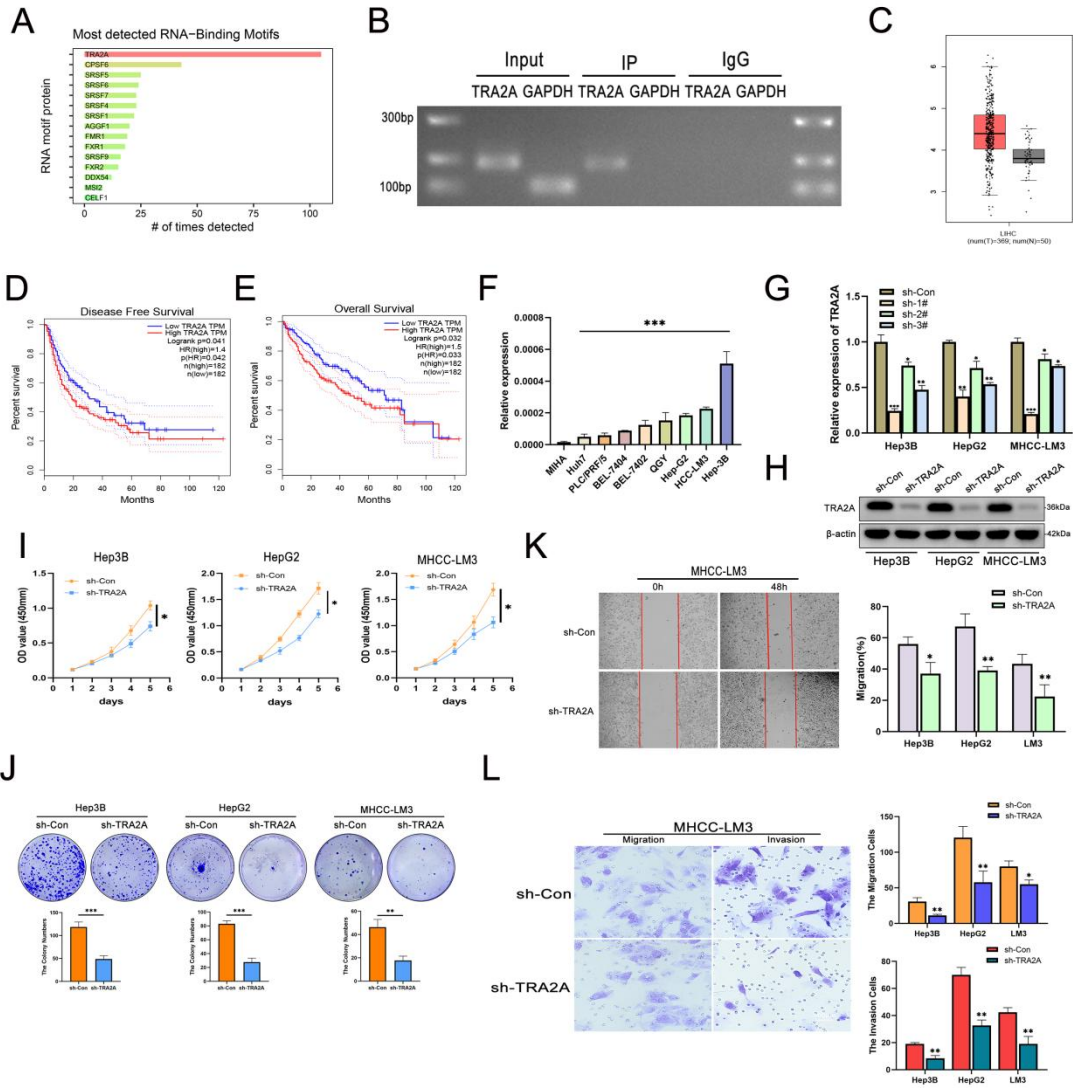
**Supplementary Table 3:** Sequences of shRNAs used in this study

Gene	sequence
sh-Con	TCCGAACGTGTCACGTA
Sh-Lnc-ZEB2-19-1#	ACCAATGGGCTCAAGAATAAA
Sh-Lnc-ZEB2-19-2#	ATCACAATAGGCCACGAATTT
Sh-Lnc-ZEB2-19-3#	AGAAGGTCAAGGTGGTCTATG
Sh-TRA2A-1#	GCTGGATGGTAGAAGAATTCG
Sh-TRA2A-2#	GGGCAAATCCAGATCCCAACA
Sh-TRA2A-3#	CGTCGAGATTCTTACTATGAT
Sh-RSPH14-1#	GCAACAGTATGGTGCGCATAA
Sh-RSPH14-2#	GCCATGAACATAGGCTGTATG
Sh-RSPH14-3#	GCTCCTTAATGTCAGCATAT

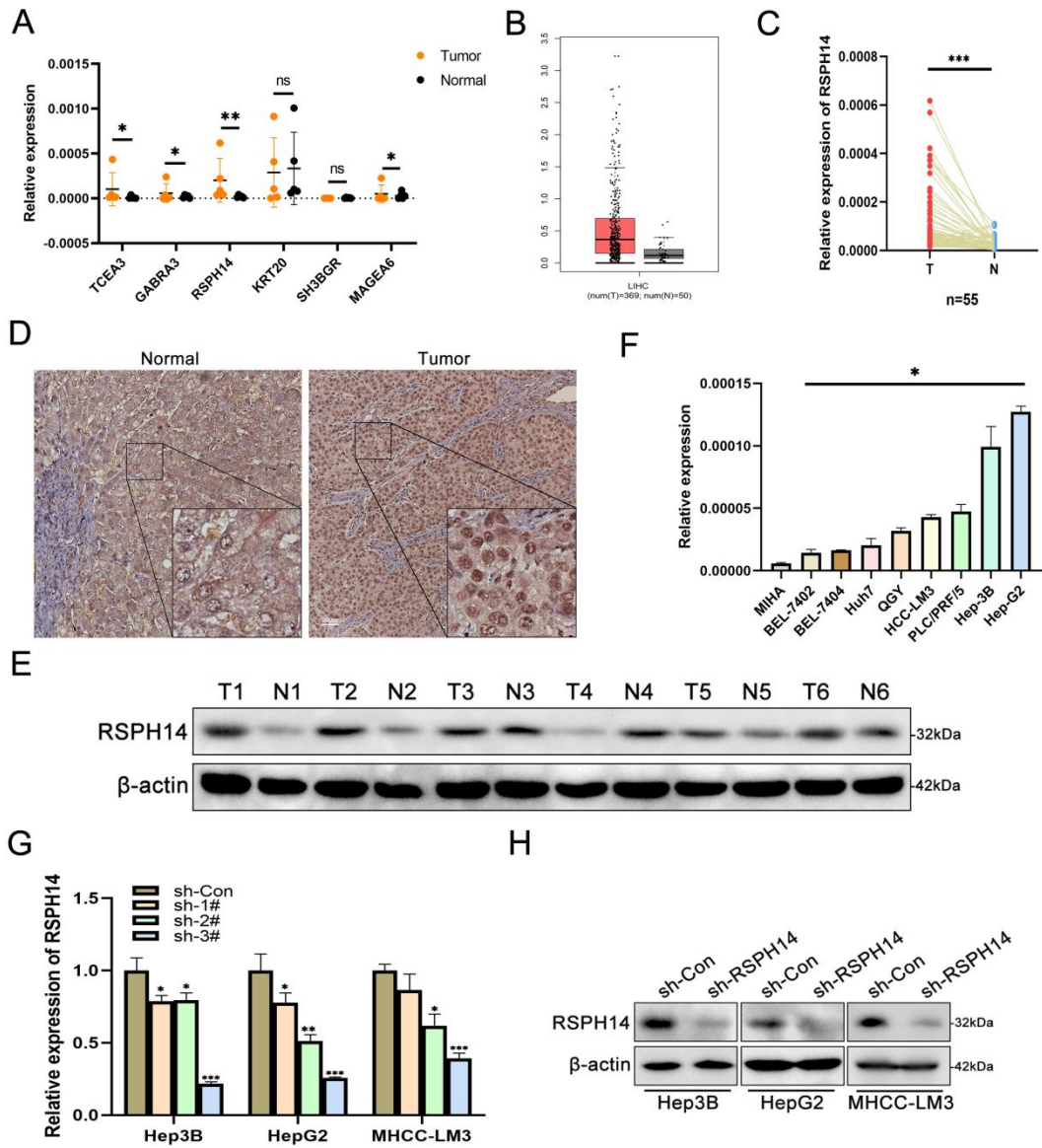
# Supplementary figure S1



# Supplementary figure S2



### Supplementary figure S3



# Supplementary figure S4

