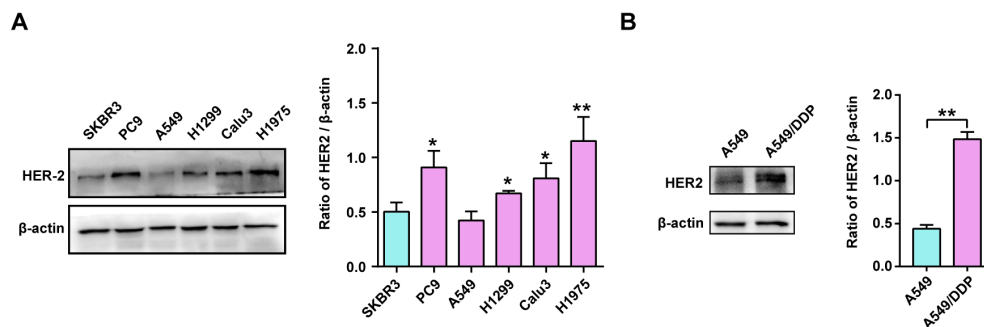


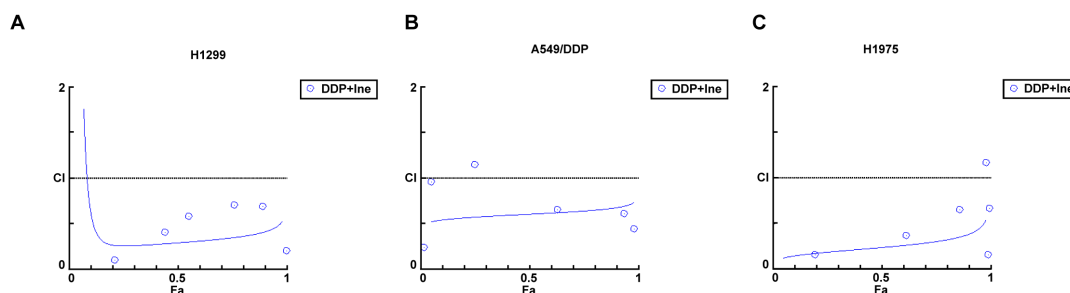
1 **Supplementary Material**



2

3 **Supplementary Figure 1. (A)** HER2 expression levels in SKBR3, PC9, A549, H1299, Calu3 and
 4 H1975 were examined by Western blotting. β -actin was used as a loading control. **(B)** HER2
 5 expression levels in A549 and A549/DDP were examined by Western blotting. β -actin was used as
 6 a loading control. * $p < 0.05$, ** $p < 0.01$

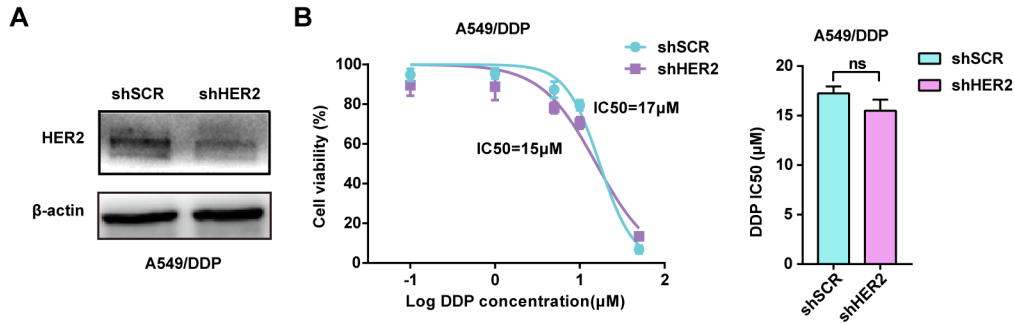
7



8

9 **Supplementary Figure 2. (A)** H1299 cells were treated with different combinations of
 10 concentrations of DDP and Ine for 5 days, and the CI values of DDP combined with Ine were
 11 calculated for H1299 cell line. **(B)** A549/DDP cells were treated with different combinations of
 12 concentrations of DDP and Ine for 5 days, and the CI values of DDP combined with Ine were
 13 calculated for A549/DDP cell line. **(C)** H1975 cells were treated with different combinations of
 14 concentrations of DDP and Ine for 5 days, and the CI values of DDP combined with Ine were
 15 calculated for H1975 cell line. Ctrl, control (untreated cells); DDP, cisplatin; Ine, inetetamab

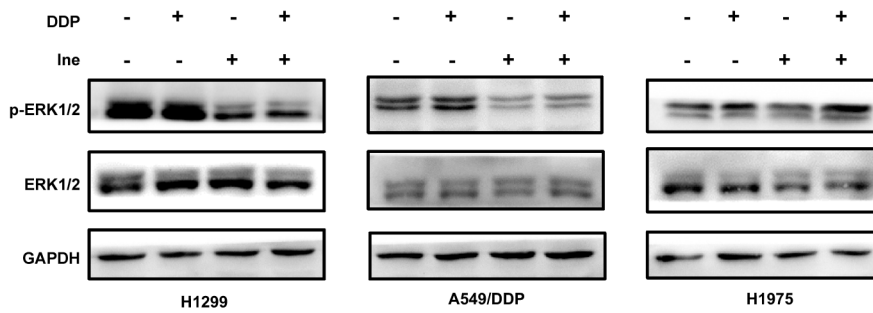
16



17

18 **Supplementary Figure 3.** (A) The levels of HER2 protein in A549/DDP-SCR and A549/DDP-
 19 shHER2 cells were examined by Western blot. (B) A549/DDP-shHER2 and corresponding vector
 20 control cells were treated with the indicated doses of cisplatin for 48 h, and cell viability was
 21 analyzed by a CCK-8 assay. ns, not statistically significant.

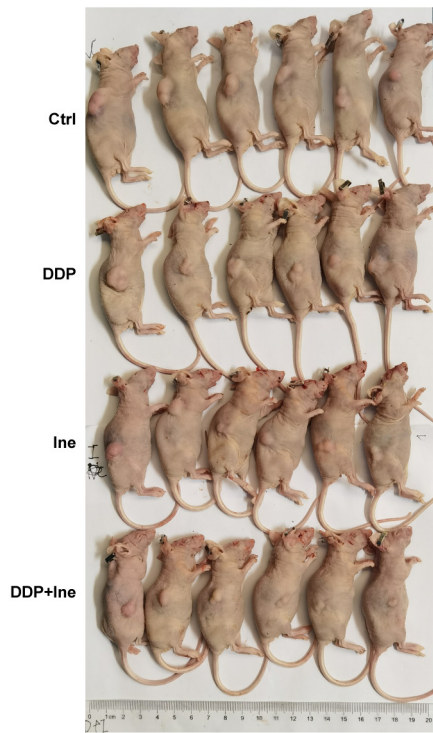
22



23

24 **Supplementary Figure 4.** Western blot analysis of p-ERK1/2 and ERK1/2 proteins levels in
 25 indicated cells treated with DDP and Ine alone or in combination for 4 days. GAPDH served as a
 26 loading control. Ine, inetetamab; DDP, cisplatin

27



28

29 **Supplementary Figure 5.** H1975 cells were subcutaneously injected to the right flanks of
30 BALB/c nude mice. The mice were treated with inetetamab, cisplatin, or their combination as
31 described in Methods. The control group was injected with PBS.

32