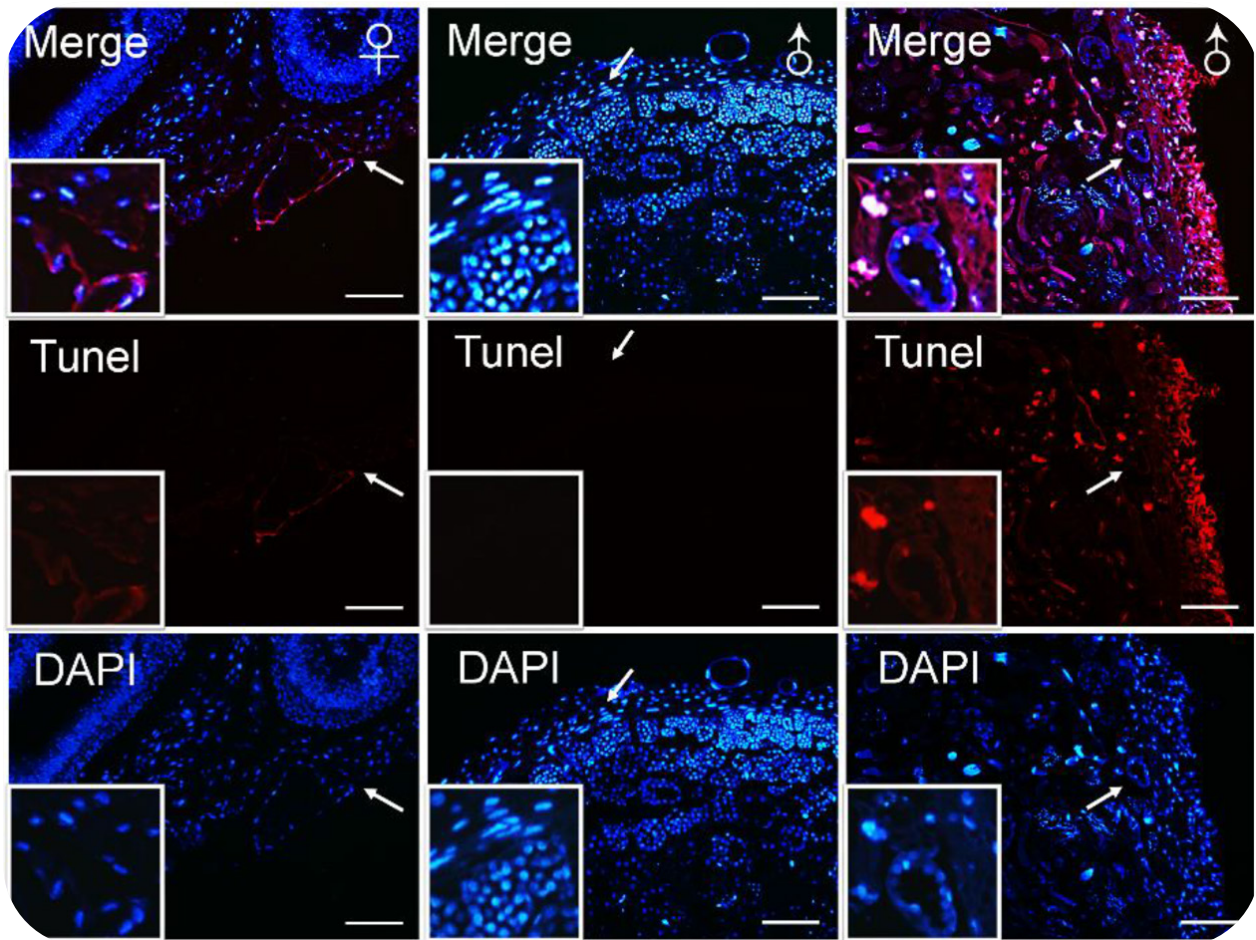


International Journal of Biological Sciences



COVER FEATURE: Yong-Feng Wang, Xue-Dong Chen, Guang Wang, Qiu-Ying Li, Xin-Yin Liang, Yang-Hu Sima, Shi-Qing Xu. *Influence of hyperproteinemia on reproductive development in an invertebrate model*



ISSN 1449-2288



9 771 449 228003



IVYSPRING
INTERNATIONAL PUBLISHER