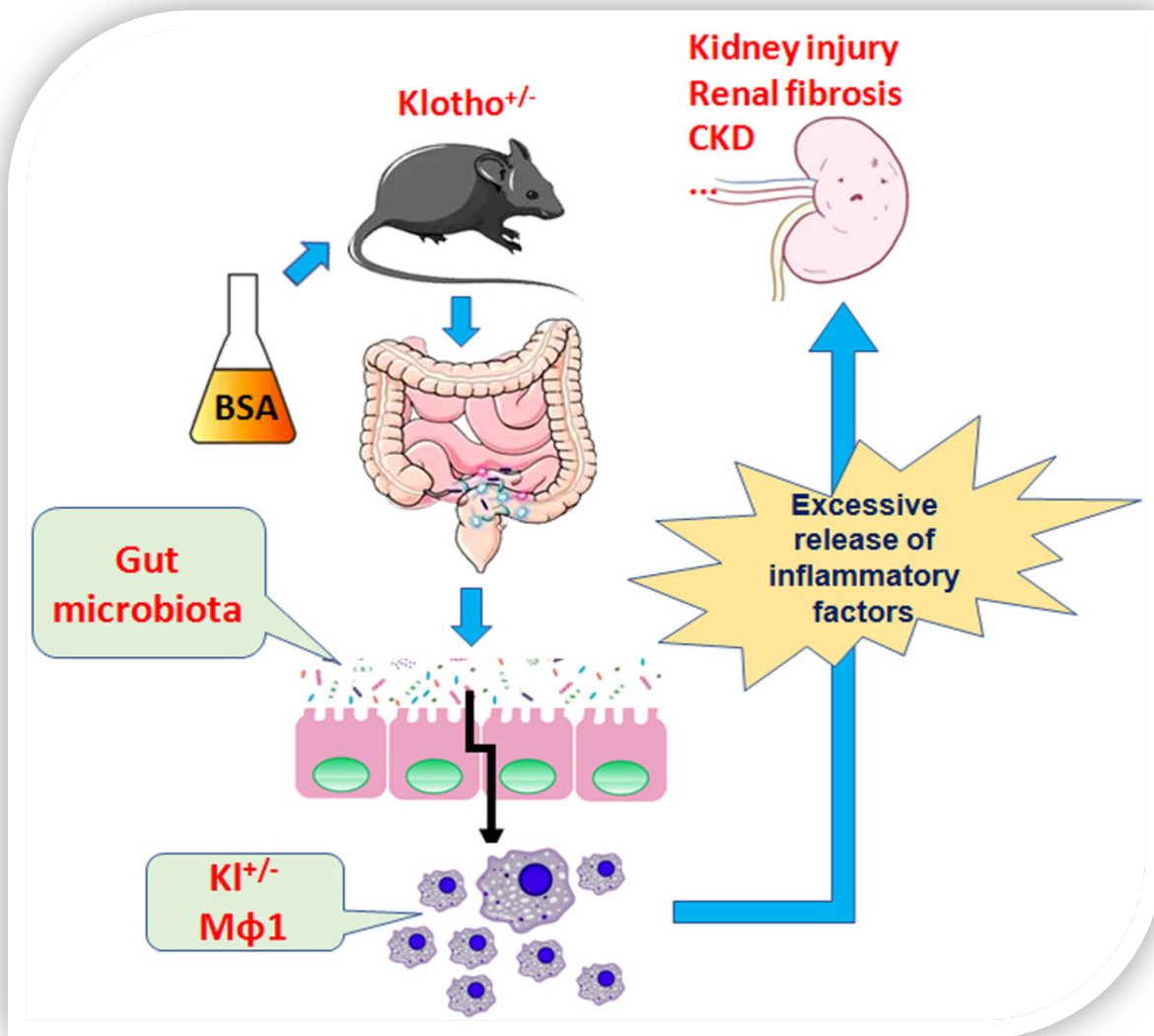


International Journal of Biological Sciences



COVER FEATURE: Lingyun Lai, Yi Li, Jianjun Liu, Lei Luo, Jianguo Tang, Jun Xue and Te Liu. Bovine serum albumin aggravates macrophage M1 activation and kidney injury in heterozygous Klotho-deficient mice via the gut microbiota-immune axis



ISSN 1449-2288



9 771 449 228003



IVYSPRING
INTERNATIONAL PUBLISHER