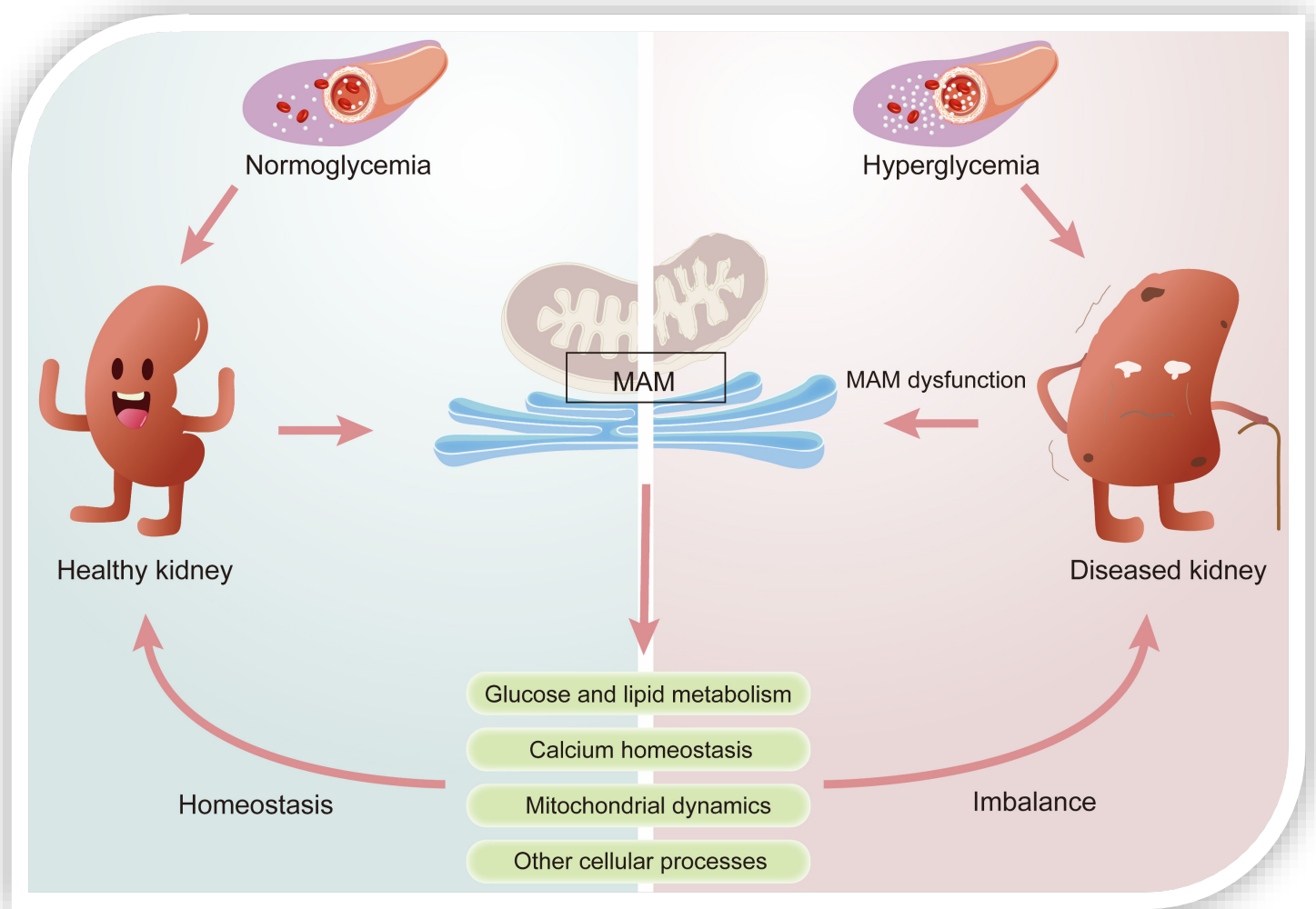


# International Journal of Biological Sciences



**Cover feature: Broadening horizons: the contribution of mitochondria-associated endoplasmic reticulum membrane (MAM) dysfunction in diabetic kidney disease**  
Yong Liu, Yingjin Qiao, Shaokang Pan, Jingfang Chen, et al.



**IVYSPRING**  
INTERNATIONAL PUBLISHER