

# Immunophenotyping at the Time of Diagnosis Distinguishes Two Groups of Nasopharyngeal Carcinoma Patients: Implications for Adoptive Immunotherapy

Jiang Li et al.

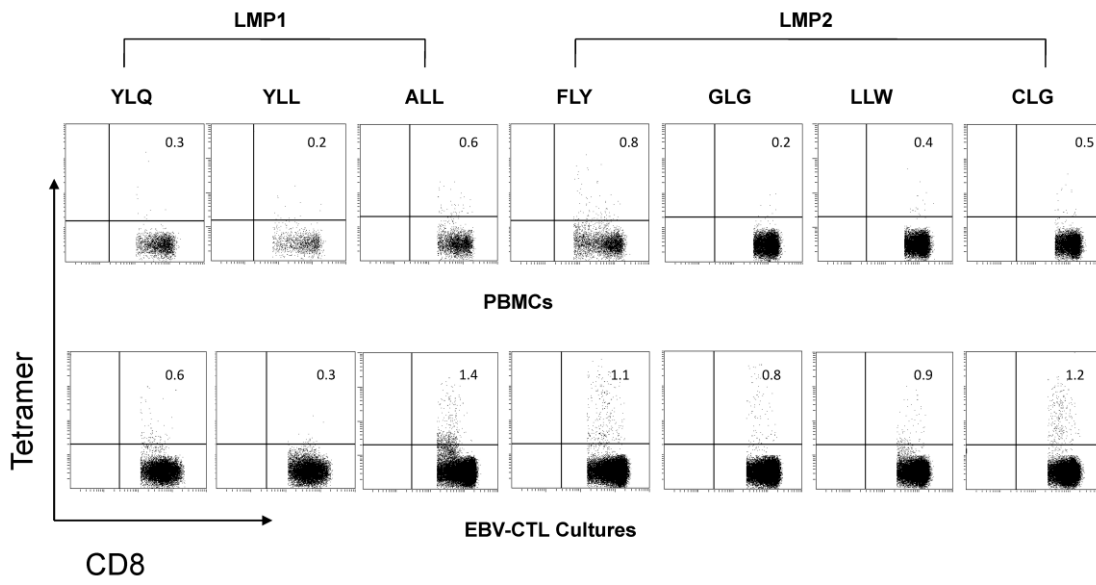
Supplement Materials

**Table S1.** The number and phenotype of PBMCs from the patients of NPC Group 1 and Group 2

Groups	No (PBMC)	Lymphocytes (number/ul)	% of positive cells <sup>a</sup>							
			CD3+	CD8+ CD3+	CD4+ CD3+	CD16+	CD45RO+ CD3+	CD45RA +CD3+	<sup>b</sup> CD25+ CD4+	<sup>b</sup> CD25- CD4+
	P13	5400	62.7	29.3	34.75	18.8	-	-	-	-
	P15	8700	58.2	24.2	26.0	-	-	-	-	-
	P19	8400	64.9	18.5	33.3	-	-	26.2	-	-
	P20	8300	56.3	29.4	16.2	10.2	32.6	23	6.7	11.4
	P23	-	53.1	24.1	23.4	-	15.5	20.9	5	17.2
	P24	6200	55.7	14.4	36.9	-	44.7	14.1	2.7	28.9
	P26	3200	60.3	42.8	23.5	24.7	31	39.8	3.5	22.2
	P29	10400	76.4	34.5	34	6.6	-	-	7.7	36.1
	P30	19200	72.5	8.4	53	13.3	23.1	43.5	4.4	47.3
	P32	6500	59.7	17.4	32.7	30.7	25.5	31.4	2	31.2
	P33	3200	58.7	25.6	33	31.7	22.2	22	9.8	21.5
	P34	4600	54.8	26.7	20.9	21.6	20.8	31.3	4.2	28.3
	P35	6700	51.7	21.2	17.5	34.7	31.9	19.9	10.2	8.2
	P36	8600	58.7	22.4	33	21.7	23.6	42.5	4.6	28.4
	P37	8000	57.8	18.5	27	30.1	21.5	24.9	4.2	23.4
	P40	8400	55.1	21.2	26.4	37.3	27.6	30.9	5.3	21.6
	P41	-	54.5	28.8	18.3	29.7	25.9	26.2	6.8	15.1
	P42	8100	69	30.2	29.6	27.5	42	18.9	12.9	21.5
	P43	6800	60.9	24	31.2	29.7	25.6	29.7	4.5	29.6
	P44	7200	74.8	27.7	37.1	23.4	31.6	38.2	3.4	33.6
	P45	-	71.7	28.9	31.9	18.8	23.5	22.2	5.5	27.2
	P46	13300	61	20.5	34.9	19.1	19.1	28.7	6.5	30.3
	P47	-	51.9	17.3	25.2	25	28.4	29.9	7.1	25.9
	P50	13200	70.3	22.8	40.6	21.4	32.5	19	2.8	40.4
	P51	10200	57.2	28	28.1	22.9	31.6	19.8	1.3	26.1
	P52	9000	58.4	33.5	18.7	36.8	28.5	33.2	3.9	16.7
	P54	6900	63.6	17.6	37	18	36.2	14.1	4	35.9
	P59	4800	76.4	28.5	43.7	22.6	38.2	37.6	15.4	30.9
	P80	8000	70.6	19.6	46.3	14.5	22.6	22	16	32
	P81	8700	71.5	21.4	40	6.4	39.7	18.2	-	-
	P84	7400	60.8	20.9	35.4	16.7	25.2	28.5	3	13.7

	P86	9900	59.5	26.6	13.8	4.8	14.8	21.2	-	-
	P92	7400	56.8	21.5	31.8	19.9	28.9	32.5	-	29.4
	P93	6800	60.9	17.7	33.7	21.2	18.8	23	5.2	31.4
	P94	10100	63.4	10.2	48.6	14.7	18.4	29.1	2	20.8
	P95	3800	68	23.3	34.7	12.6	35.8	19.8	2	16
	P98	5690	58.6	28.7	28.2	13.3	33.3	22.3	4	25.3
	P99	6500	58.1	29.3	25.6	14.8	33.4	19	15	13.5
	P120	7300	58.2	14	48.2	24.4	4.8	13.6	3.5	44.6
	P121	8100	58	25	31.7	25	14.3	24.5	4.6	3.5
NPC Group 2	P16	6200	52.8	12.4	34.3	-	-	20.2	-	-
	P17	3700	35.6	12	22.5	-	-	11.3	-	-
	P18	nd	23.8	10.7	11.7	-	-	11.4	-	-
	P21	nd	40.3	4.5	28.9	-	22	13.4	-	-
	P22	5000.0	52.2	22	25	29.2	16.4	35.4	8.3	23.2
	P27	nd	37.1	9.6	11.8	57.1	12.3	6.2	19.7	11
	P28	9100	39.6	10.2	18.8	43.5	31	16.7	8.6	20.3
	P31	8900	48.8	10.6	37.6	37.5	28.6	15.5	11	33
	P38	6500	52.2	39.3	15.3	42.4	22	17.9	8.6	14.8
	P49	5800	47.9	18.9	26.4	36.6	18.7	-	4.8	25.3
	P55	5900	49.2	14	25.9	40	26.8	29.7	3.3	23.1
	P56	11100	42	16.8	21	29.7	26.8	24.5	3.9	19.5
	P57	-	39.5	15.5	19.8	13.2	12.1	14.1	3	13.9
	P58	8100	43	11.2	15.7	26.1	19.6	15.7	2.7	14.1
	P83	6600	45	15.5	27.9	30.4	20.7	24.1	5.8	20.6
	P89	7200	41.9	4.3	32.6	23.5	16.8	21.1	4.4	33.6
	P90	-	27.8	12.2	11.8	43.5	7.1	19.5	7.8	9.2
	P91	3800	44.4	16.4	25.2	31.5	22.8	15.4	3	26.7
	P96	10200	49.7	17.4	32.8	25.6	16.7	22.1	2	23.4
	P97	5400	32.5	5.1	21.6	48	14.2	13.4	4	8.1
P100	5300	57.2	7.4	42.5	8.4	12.8	5.1	7.8	28.2	
P101	6800	51.3	7.2	30.5	44.2	29.9	22.1	6.1	24.3	
P102	7100	43.9	15.4	20.9	33.9	12.3	18.9	6.7	29.7	
P103	5400	51.3	14	30.5	16.6	27.3	26	7.9	26.7	
P113	7300	41.6	8.2	17.3	33.3	9.4	13.1	3	15.6	
P119	5400	47.6	11.7	39	47.3	22.5	25.4	5.6	28.9	
P122	6500	51.6	30.4	26	41.2	13.8	14.5	4.8	22.5	

Note: - means not done; a: the percentage of positive cells on lymphocyte gate; b the percentage of positive cells on CD4+ gate.



**Figure S1.** Representative dot plots for CD8 and tetramer staining in PBMCs (A) and EBV-CTL cultures (B) from one NPC patient of NPC Group 1.