

Supplementary Material

Figure S1 Preparation of the probe for Northern blot analysis of the expression of ds*NIEcR-c* in transgenic rice lines. (A) The hairpin ds*NIEcR-c* structure was cloned into the pGEM®-T vector using the *Sac* I and *Apa* I restriction enzyme sites. (B) The recombinant vector was identified by the restriction enzymes *Sac* I and *Apa* I, M represents the DL5000bp mark.

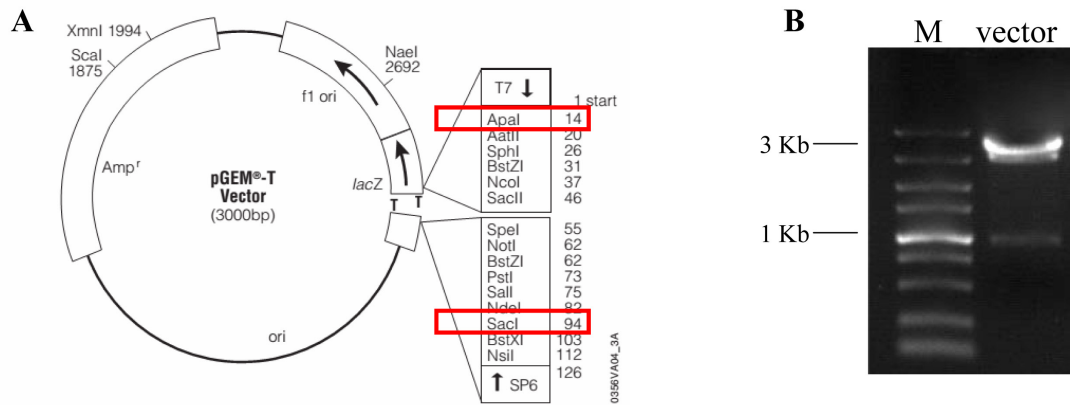


Figure S2 The standard curves of the reference gene *SPS* and the target gene fragment T-DNA.

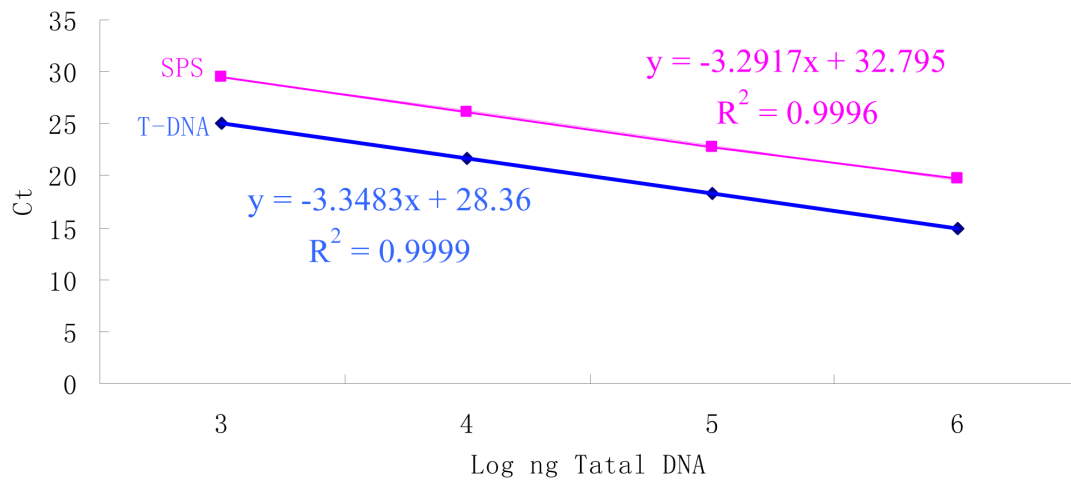


Figure S3 The number of offspring from a pair of *Nilaparvata lugens* brachypterous adults from transgenic rice lines (E6-E8). Each data point is the mean±SE from more than three replicates in the same line. An asterisk indicates a significant difference in the number of offspring between treatment and control (*t*-test, $p < 0.05$).

