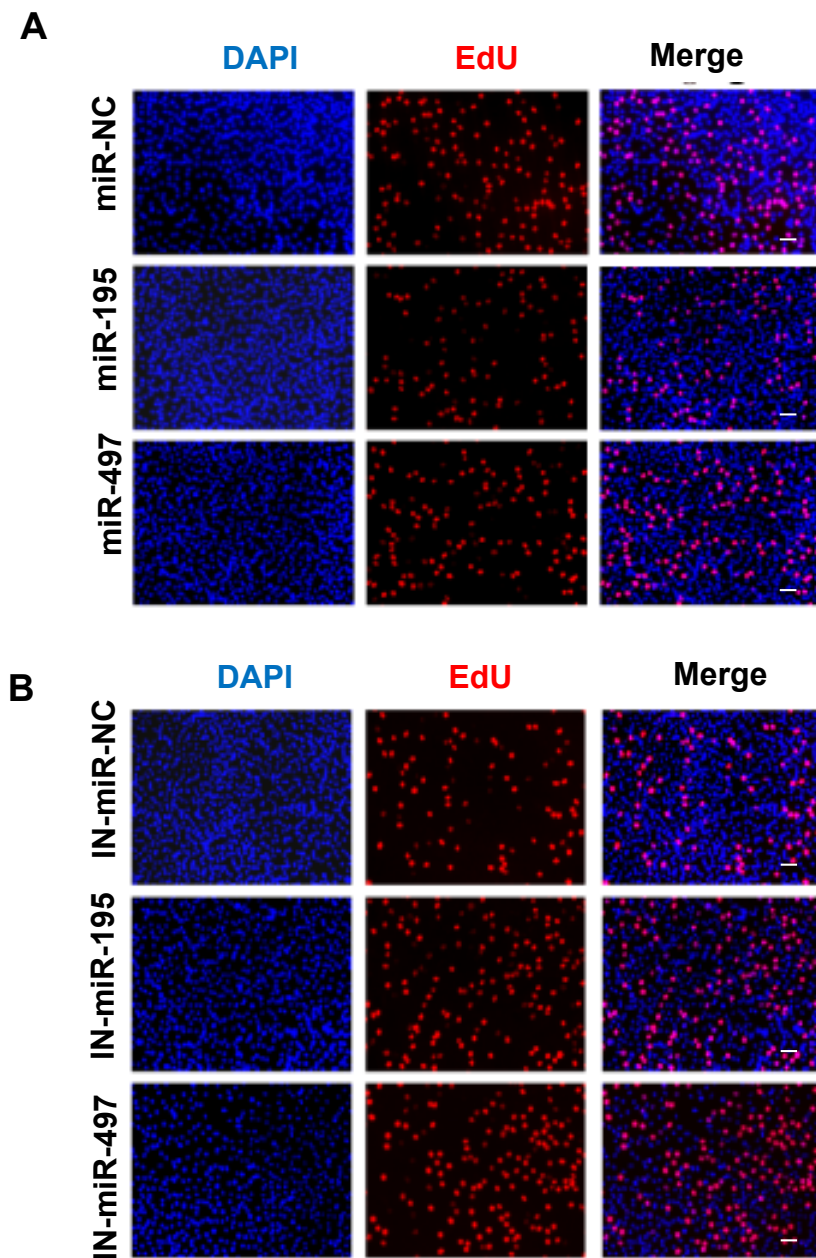


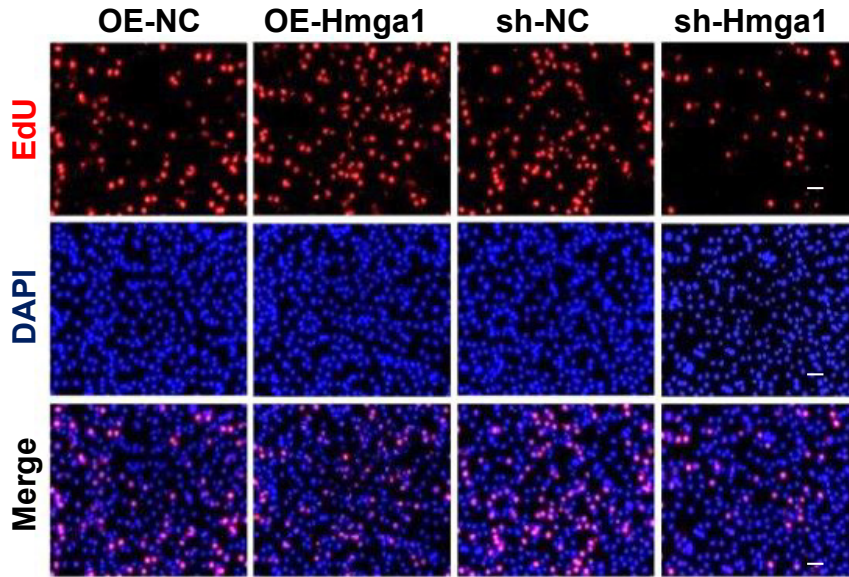
Supplemental Figure 1



Supplemental Figure 1.

The cell proliferation analysis was performed by EdU incorporation of C2C12 myoblasts transfected with miRNA mimics (A) and miRNA inhibitors (B). Scale bar, 200 μ m.

Supplemental Figure 2



Supplemental Figure 2.

The cell proliferation analysis was performed by EdU incorporation of C2C12 myoblasts lentivirally overexpressing Hmga1 and sh-Hmga1. Scale bar, 200 μ m.