

Fig. S1 Construction of a 10-gene signature model in the TCGA cohort. a. LASSO coefficient profiles of the expression of 26 candidate genes. b. Selection of the penalty parameter (λ) in the LASSO model via 10-fold cross-validation. The dotted vertical lines are plotted at the optimal values following the minimum criteria (left) and “one standard error” criteria (right).

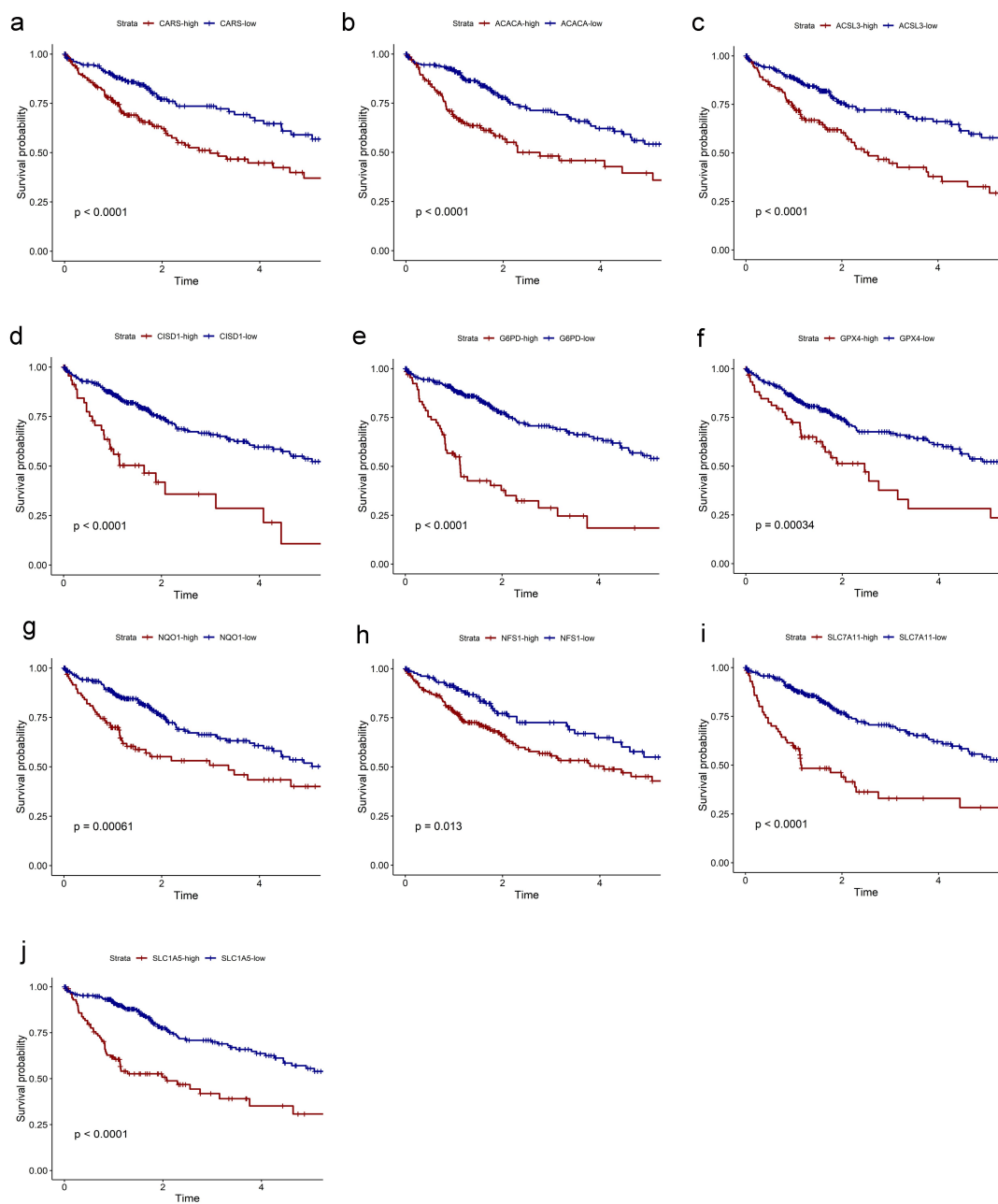


Fig. S2 Survival analyses according to the optimal cut-off expression value of each gene in the TCGA cohort. All adjusted $P < 0.05$.

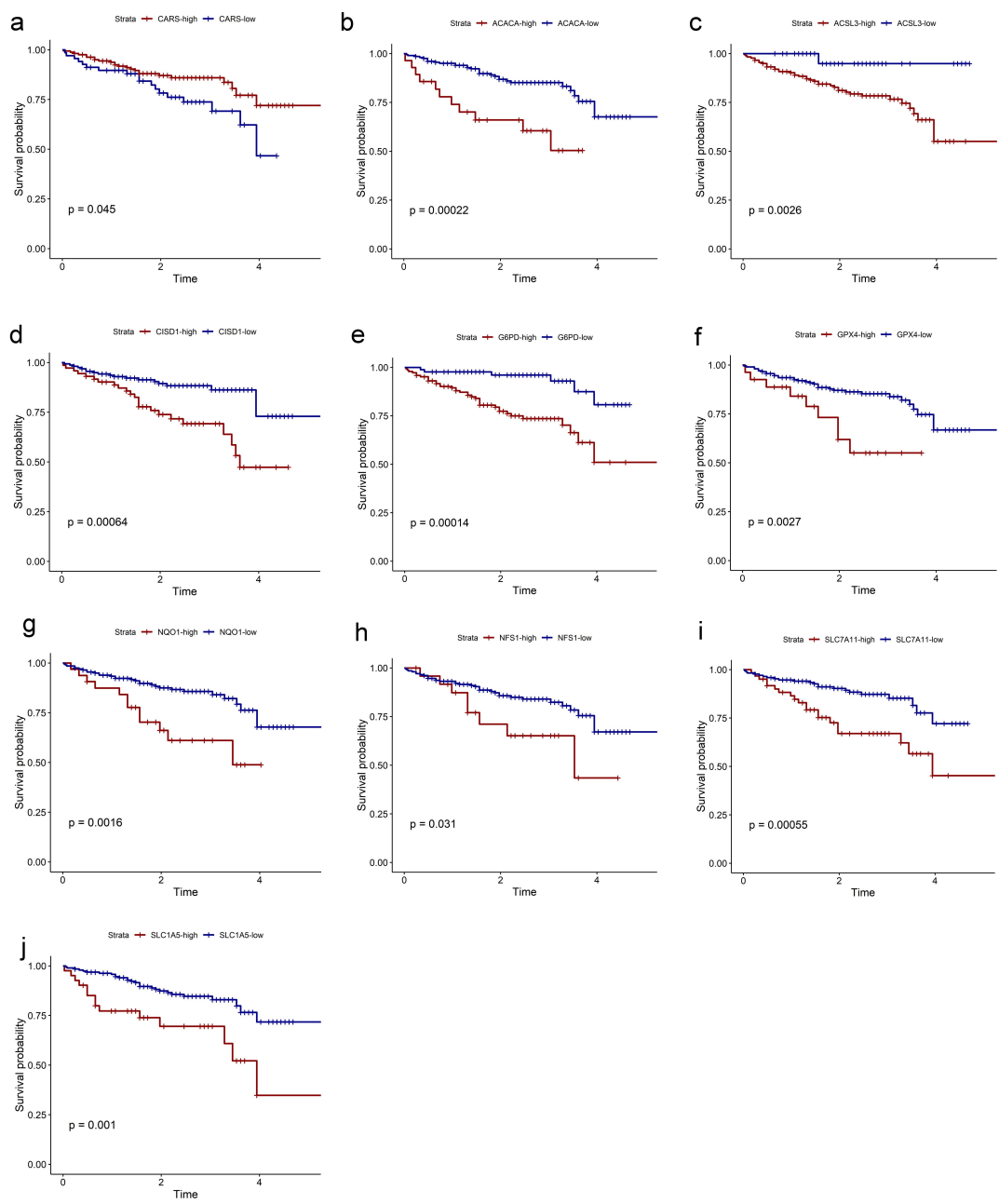


Fig. S3 Survival analyses grouped by the optimal cut-off expression value of each gene in the ICGC cohort. All adjusted $P < 0.05$.