

Supplementary data

Metformin suppresses inflammation and apoptosis of mycardiocytes by inhibiting autophagy in a model of ischemia-reperfusion injury

Running title: Metformin relieves myocardial ischemia/reperfusion via suppression of autophagy

Kai-yu Huang¹ \$, Jia-qun Que¹ \$, Ze-song Hu², Yong-wei Yu¹, Ying-ying Zhou³, Lei Wang², Yang-jing Xue¹, Kang-ting Ji¹ # and Xin-min Zhang¹ #

¹Department of Cardiology, The Second Affiliated Hospital and Yuying Children's Hospital of Wenzhou Medical University, Wenzhou 325027, Zhejiang, China

²The Second School of Medicine, Wenzhou Medical University, Wenzhou 325027, Zhejiang, China

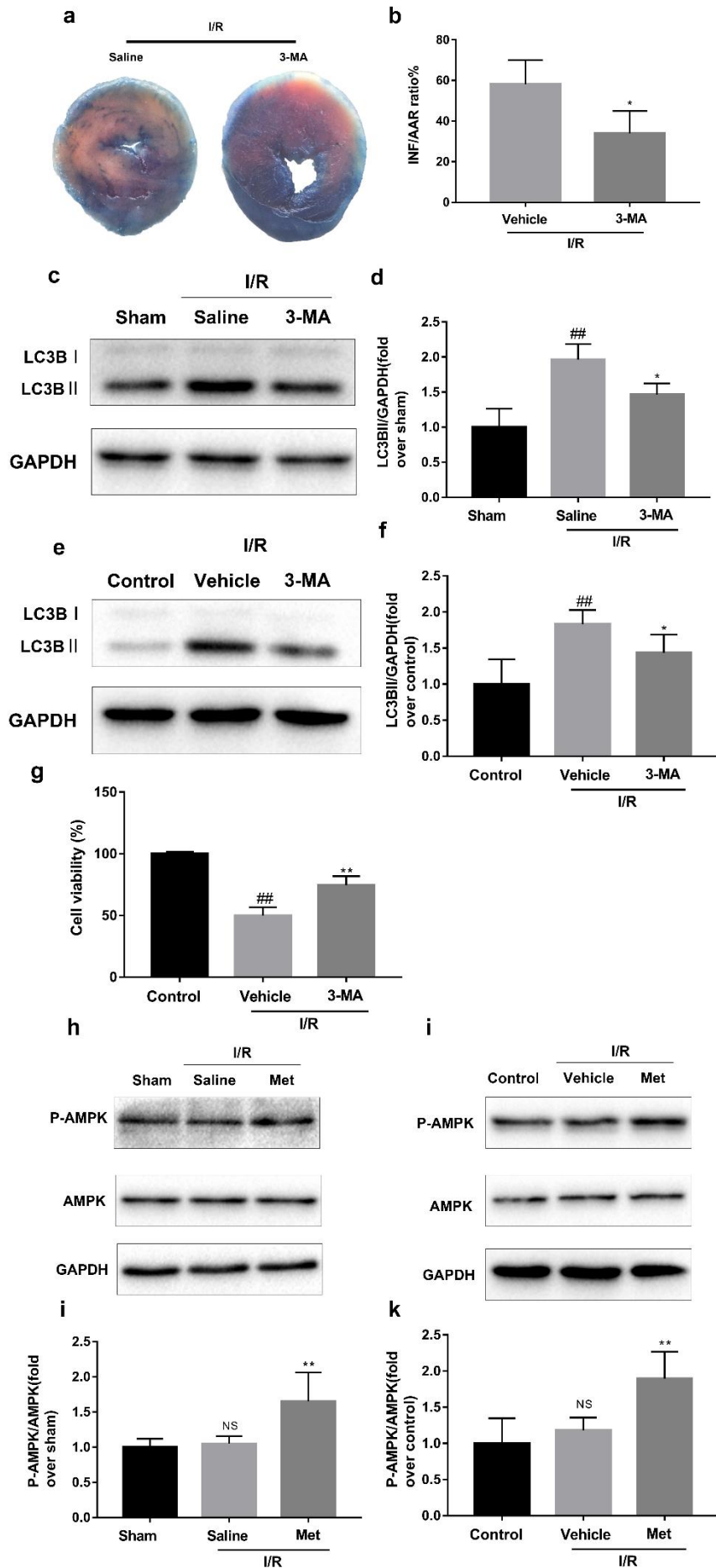
³Department of Endocrinology, The Second Affiliated Hospital and Yuying Children's Hospital of Wenzhou Medical University, Wenzhou 325027, Zhejiang, China

\$These two authors contributed equally to this work.

Co-corresponding Authors:

Kang-ting Ji, MD, Department of Cardiology, The Second Affiliated Hospital and Yuying Children's Hospital of Wenzhou Medical University, Xueyuanxi Road, No 109, Wenzhou 325027, Zhejiang, China. Tel: 86-577-88002214; Fax: 86-577-88002214; E-mail: jikt@wzmc.edu.cn

Xin-min Zhang, MD, Department of Cardiology, The Second Affiliated Hospital and Yuying Children's Hospital of Wenzhou Medical University, Xueyuanxi Road, No 109, Wenzhou 325027, Zhejiang, China. Tel: 86-577-88002214; Fax: 86-577-88002214; E-mail: zhxinming@163.com



Supplementary figure legends

Supplementary Figure S1. Mice were pretreated with 3-MA (30mg·kg⁻¹;i.p.)1h before ischemia and subjected to I/R injury, then killed at 4h after reperfusion for detection of (a, b) TTC stain, (c, d)Western blot indicating expression of LC3B protein. H9C2 cells were pretreated with 3-MA(10mM) for 2h then suffered from I/R injury for detection of (e, f)Western blot indicating expression of LC3B protein. (g)cell viability. Mice were treated with Met (125μg·kg⁻¹;i.v.) 15 min prior to ischemia, (h, j) Western blot analysis of p-AMPK/AMPK in mice myocardium after reperfusion for 4h. H9C2 cells were pretreated with Met(50μM) for 12h then subjected to I/R injury for detection of(i, k) Western blot of p-AMPK/AMPK. n = 6. Values are expressed as the means ± SD. #p<0.05,##p<0.01vs. the sham or control group,*p<0.05,**p<0.01vs. IR group, ^p<0.05,^^p<0.01 vs. IR+Met group..