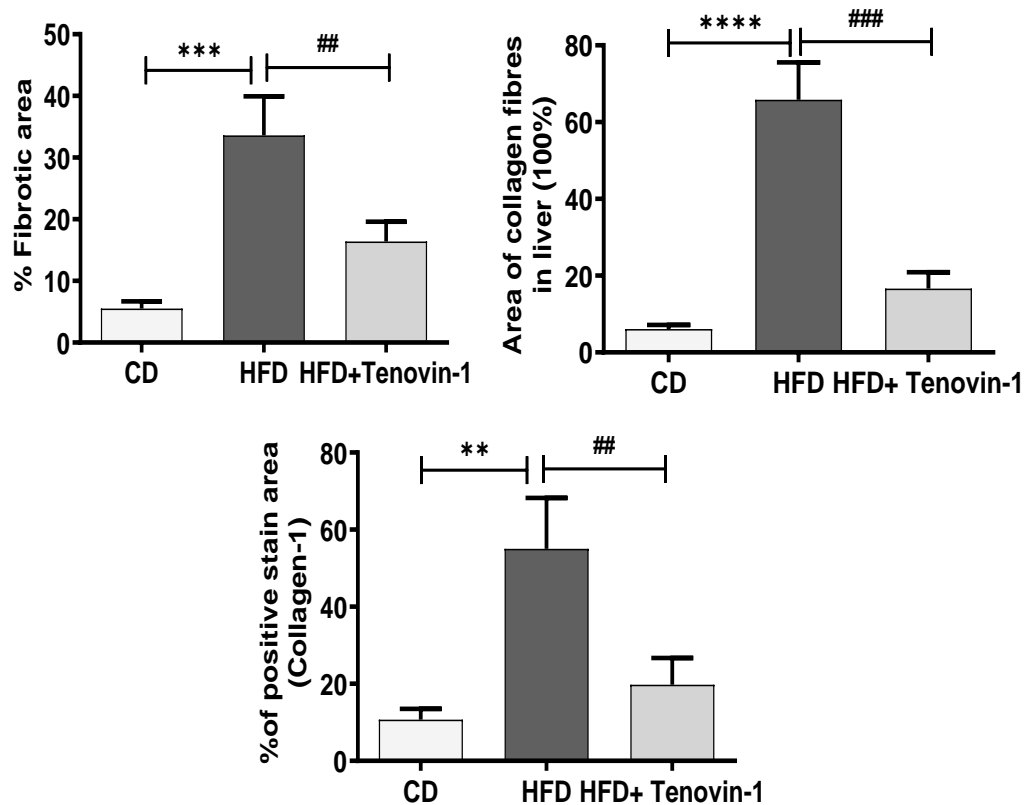


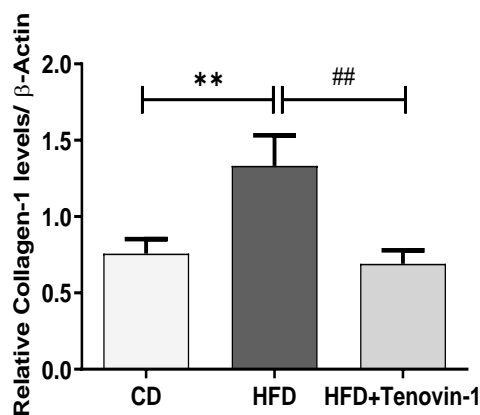
<b>SIRT1</b>	<b>Forward</b>	<b>GAA CCT CTG CCT CAT CTA</b>
	Reverse	GCA TAC TCG CCA CCT AAC
<b>SIRT2</b>	Forward	TGG TGG GTC CTA TTG TCG
	Reverse	GTG TCC GAG TCT GAA TCCT
<b><math>\beta</math>-actin</b>	Forward	CGT TGA CAT CCG TAA AGA CC
	Reverse	TAG AGC CAC CAA TCC ACA C

**Table S1:** Primer sequences (Sense, Anti-sense: 5' to 3') of genes used for RT-PCR analysis

**A**

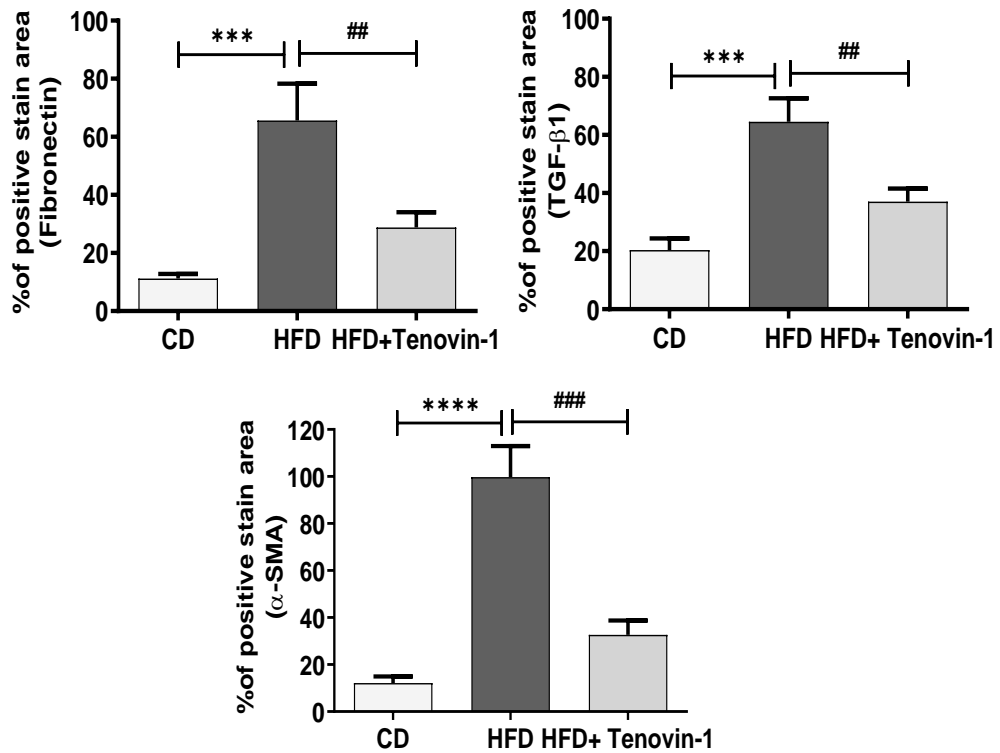


**B**



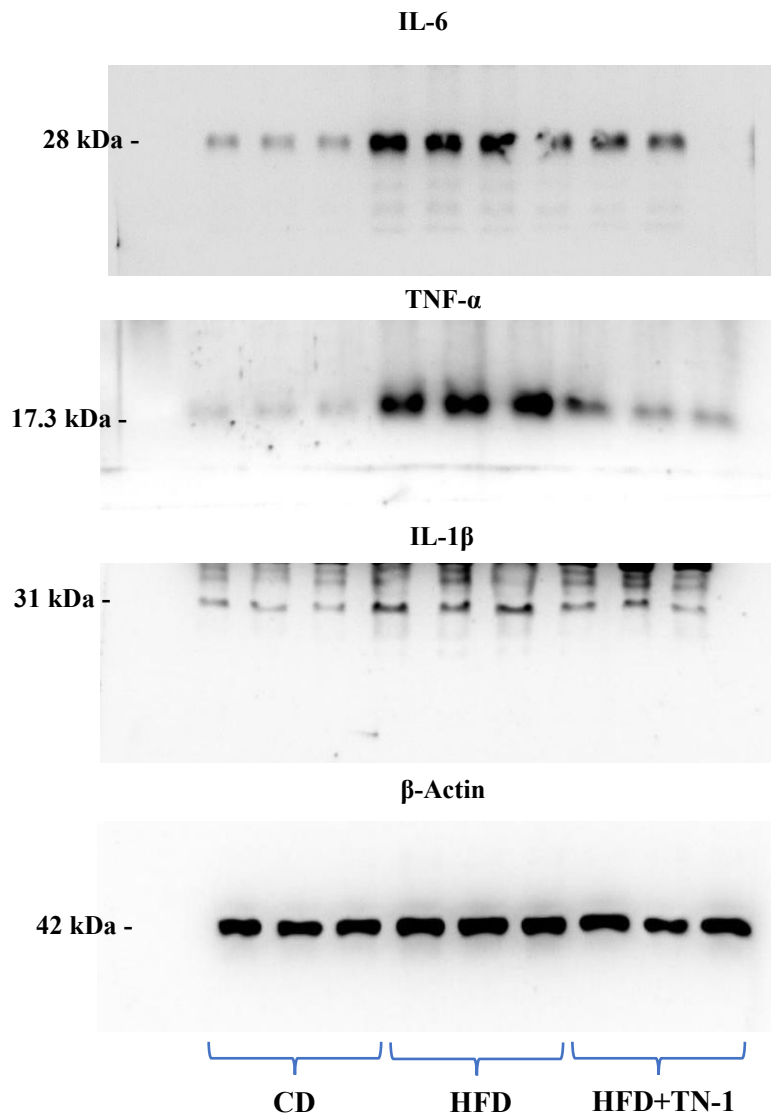
**Figure S1 A:** Graphical representation of the percentage (%) area of Collagen-1 fibers stained using Masson's Trichrome staining in the liver sections, percentage (%) fibrotic area of collagen-1 stained by Sirius Red staining in the liver sections and percentage positive area of collagen-1 stained using collagen-1 antibody in immunohistochemical staining of the liver sections. **B** Band intensity of western blot expression of collagen-1 analyzed using ImageJ software. All values are expressed as the mean  $\pm$  S.D. of six rats per experimental group (n=6). Statistical analysis was performed using one-way ANOVA followed by Bonferroni's post hoc t-test for multiple comparisons. \*\*\*\*p < 0.0001, \*\*\*p < 0.001, \*\*p < 0.01, when compared with the chow diet (CD) group. ####p < 0.001, ##p < 0.01, when compared to the High fat diet (HFD) group).

A



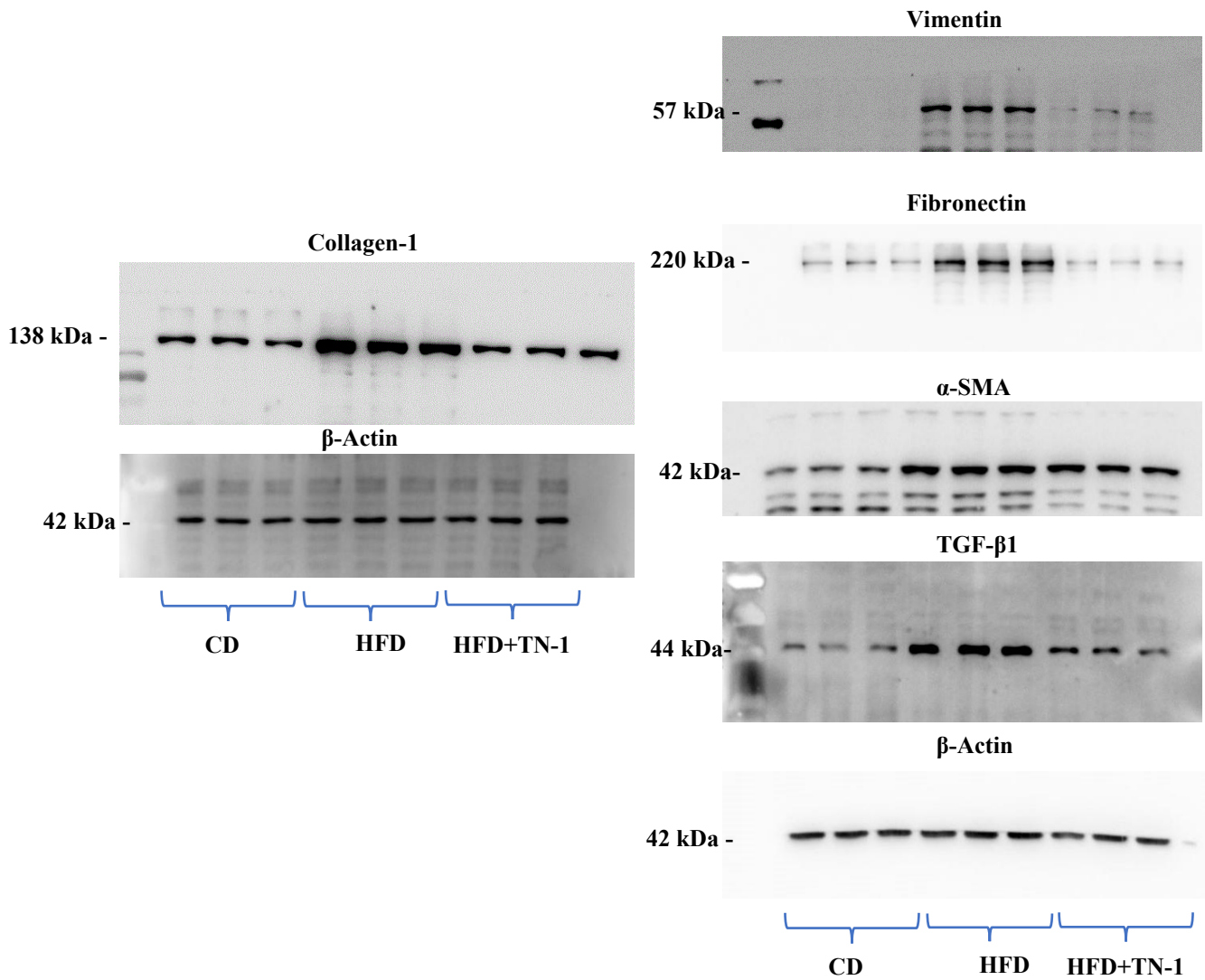
**Figure S2 A:** Graphical representation of percentage (%) positive area stained using  $\alpha$ -SMA, fibronectin and TGF- $\beta$ 1 antibody in immunohistochemical (IHC) staining of the liver sections of all experimental groups. All values are expressed as the mean  $\pm$  S.D. of six rats per experimental group (n=6). Statistical analysis was performed using one-way ANOVA followed by Bonferroni's post hoc t-test for multiple comparisons. \*\*\*\*p < 0.0001, \*\*\*p < 0.001, when compared with the chow diet (CD) group. ### p < 0.001, ## p < 0.01, when compared to the High fat diet (HFD) group).

**A**



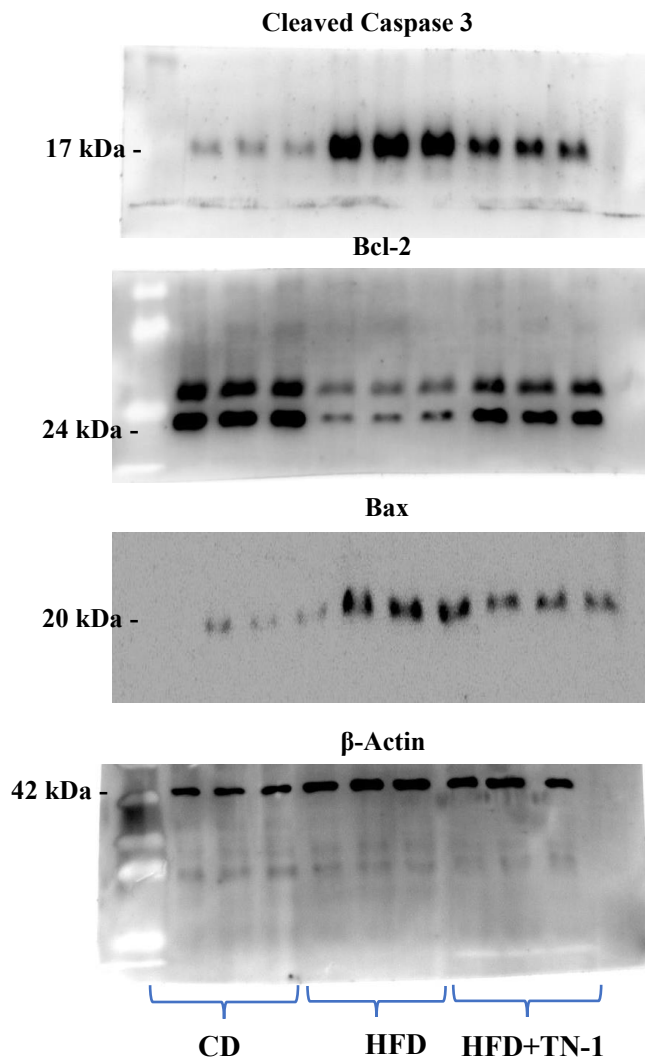
**Figure S3 A:** Whole blot images of IL-6 (28 kDa), IL-1β (31 kDa), TNF-α (17.3 kDa) and β-Actin (42 kDa) as represented in Figure 3C.

**B**



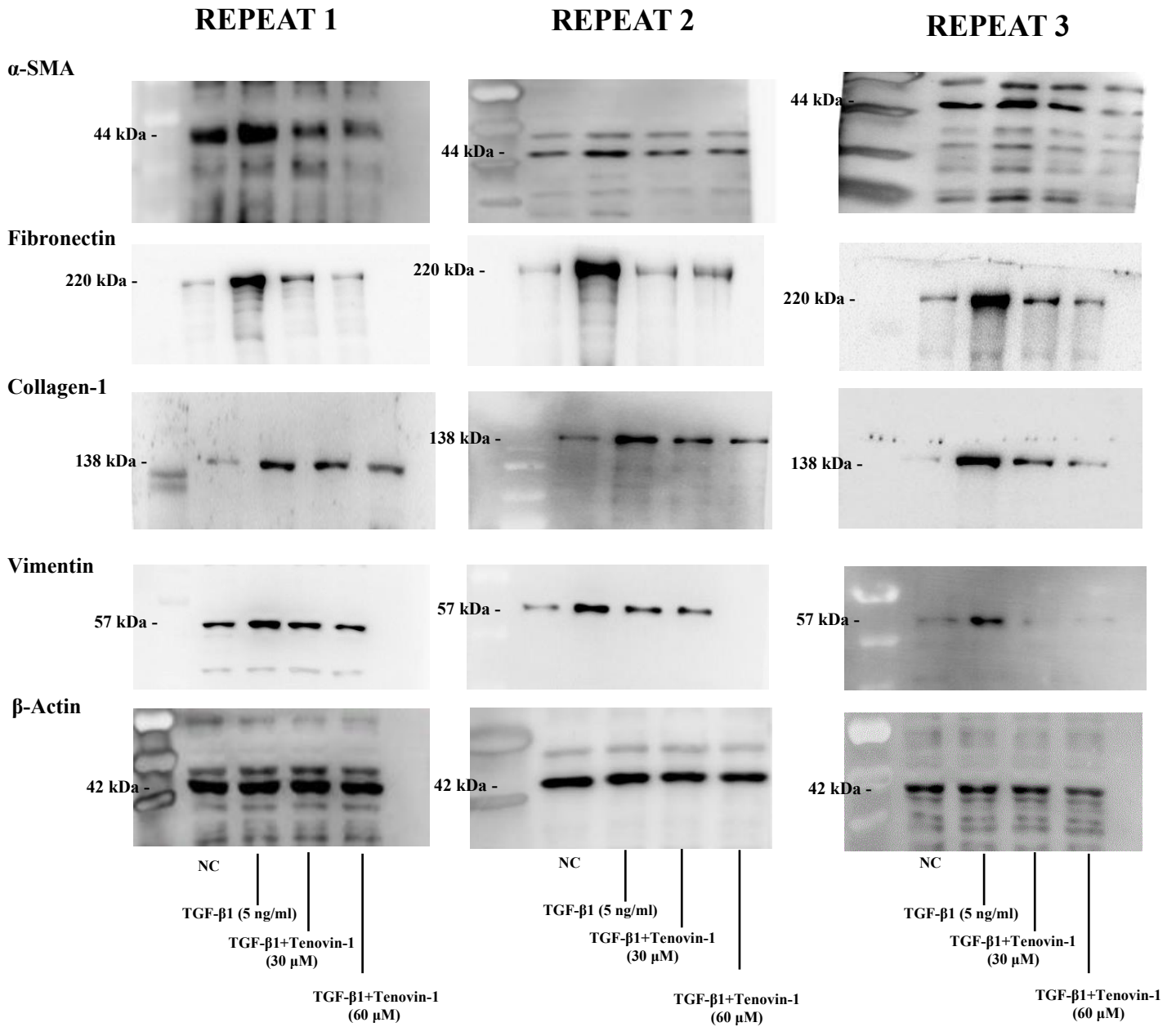
**Figure S3 B:** Whole blot images of Collagen-1 (138 kDa), Vimentin (57 kDa), Fibronectin (220 kDa),  $\alpha$ -SMA (42 kDa), TGF- $\beta$ 1 (44kDa) and  $\beta$ -Actin (42 kDa) as represented in Figure 4B, E.

**C**



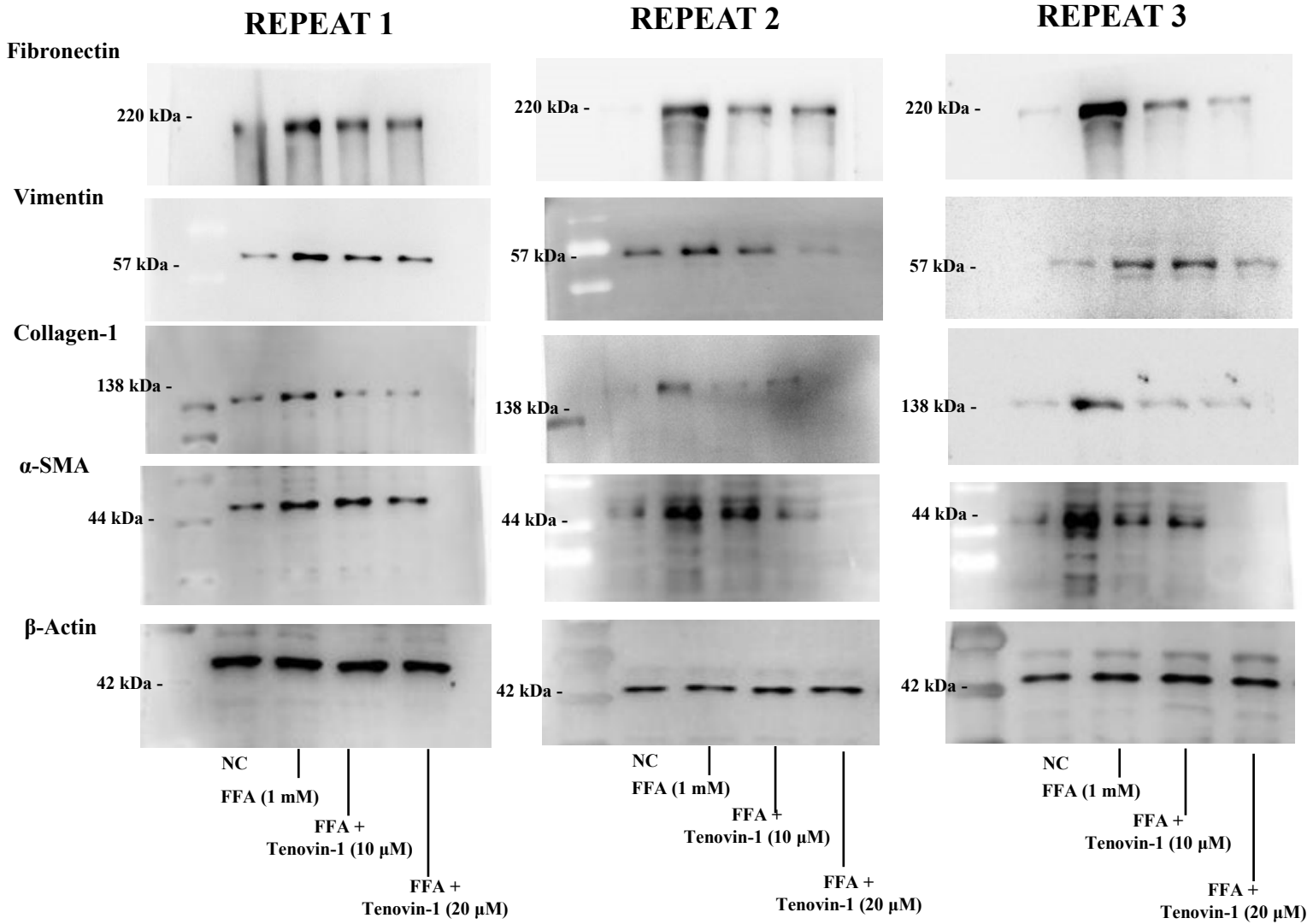
**Figure S3 C:** Whole blot images of **Cleaved Caspase 3** (17 kDa), **Bcl-2** (24 kDa), **Bax** (20 kDa) and  $\beta$ -Actin (42 kDa) as represented in Figure 5A.

**D**



**Figure S3 D:** Whole blot images of  $\alpha$ -SMA (44 kDa), Fibronectin (220 kDa), Collagen-1 (138 kDa), Vimentin (67 kDa) and  $\beta$ -Actin (42 kDa) as represented in Figure 6B performed in 3 repeats.

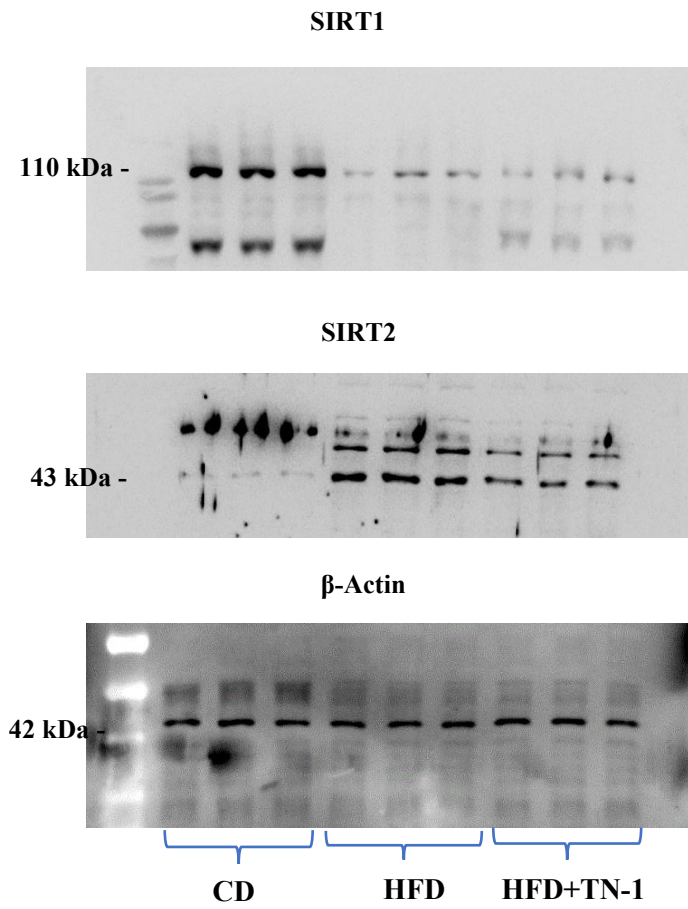
**E**



**Figure S3 E:** Whole blot images of **Fibronectin** (220 kDa), **Vimentin** (67 kDa), **Collagen-1** (138 kDa),  **$\alpha$ -SMA** (44 kDa), and  **$\beta$ -Actin** (42 kDa) as represented in Figure 6J performed in 3 repeats.



**F**



**Figure S3 F:** Whole blot images of SIRT1(110 kDa), SIRT2 (43 kDa), and  $\beta$ -Actin (42 kDa) as represented in Figure 7C.

**G**

**REPEAT 1**

**REPEAT 2**

**REPEAT 3**

**SIRT1**

110 kDa -

110 kDa -

110 kDa -

**SIRT2**

43 kDa -

43 kDa -

43 kDa -

**$\beta$ -Actin**

42 kDa -

42 kDa -

42 kDa -

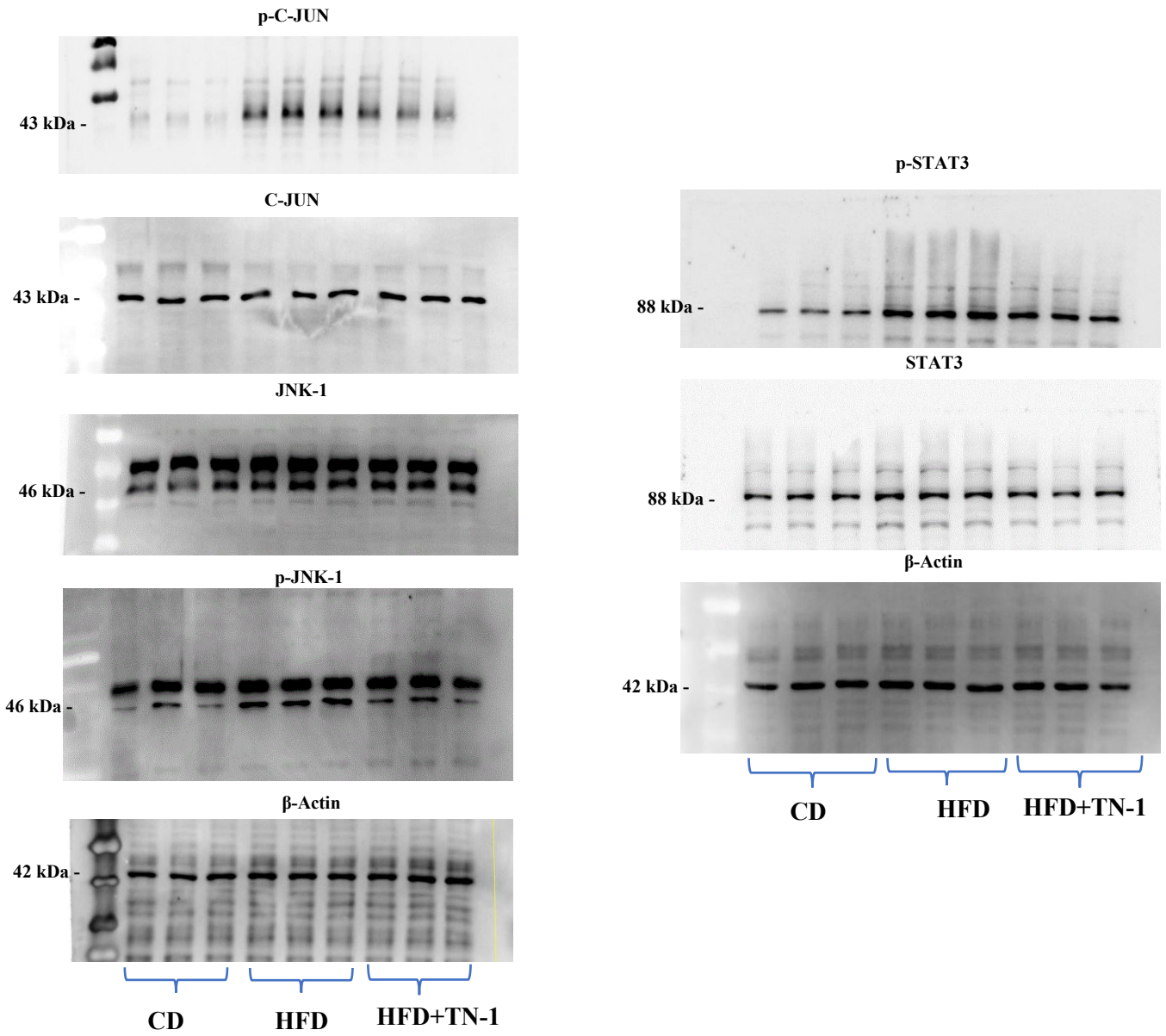
NC | FFA (1 mM) | FFA + Tenovin-1 (10  $\mu$ M) | FFA + Tenovin-1 (20  $\mu$ M)

NC | FFA (1 mM) | FFA + Tenovin-1 (10  $\mu$ M) | FFA + Tenovin-1 (20  $\mu$ M)

NC | FFA (1 mM) | FFA + Tenovin-1 (10  $\mu$ M) | FFA + Tenovin-1 (20  $\mu$ M)

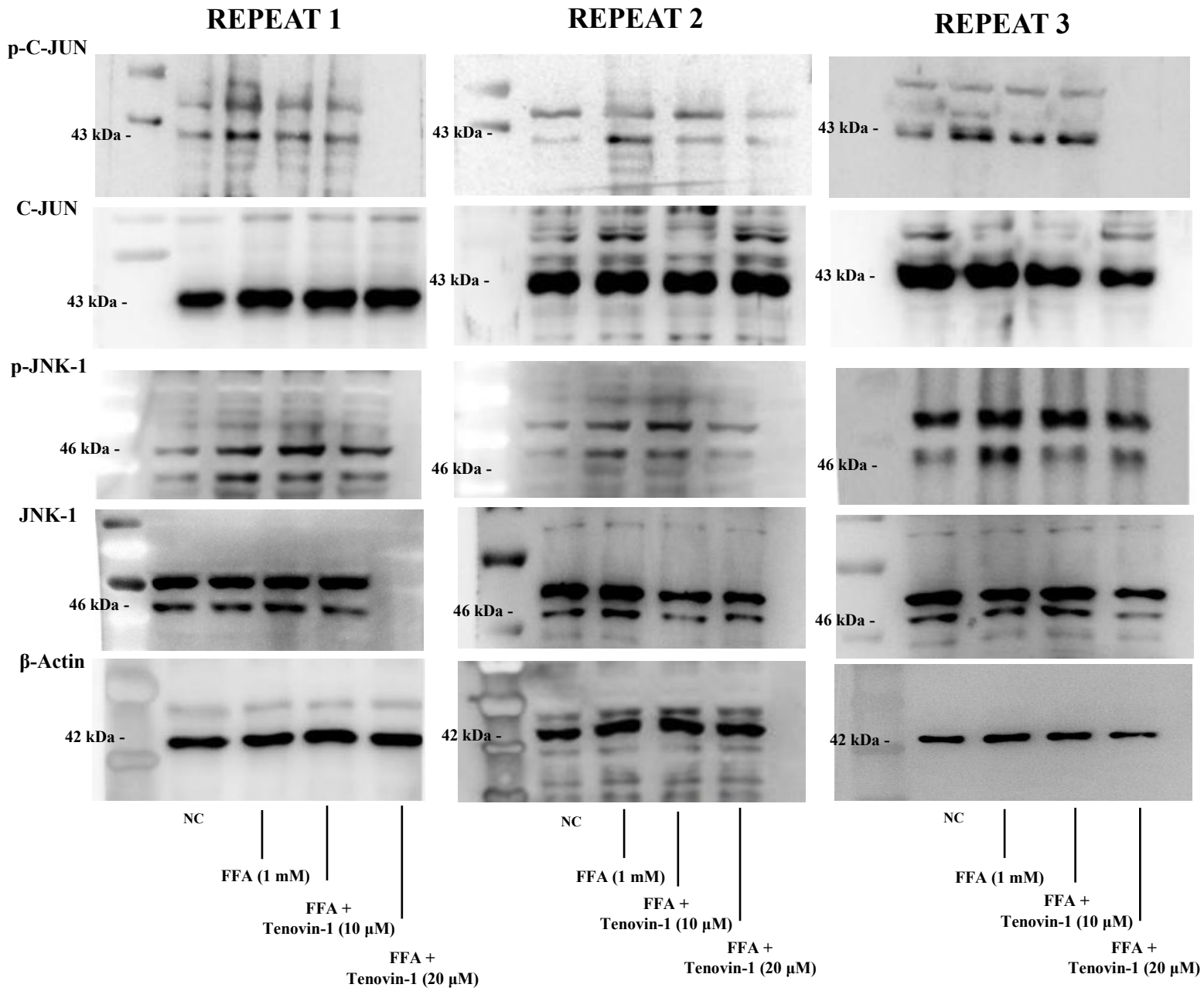
**Figure S3 G:** Whole blot images of SIRT1(110 kDa), SIRT2 (43 kDa), and  $\beta$ -Actin (42 kDa) as represented in Figure 7F performed in 3 repeats.

**H**



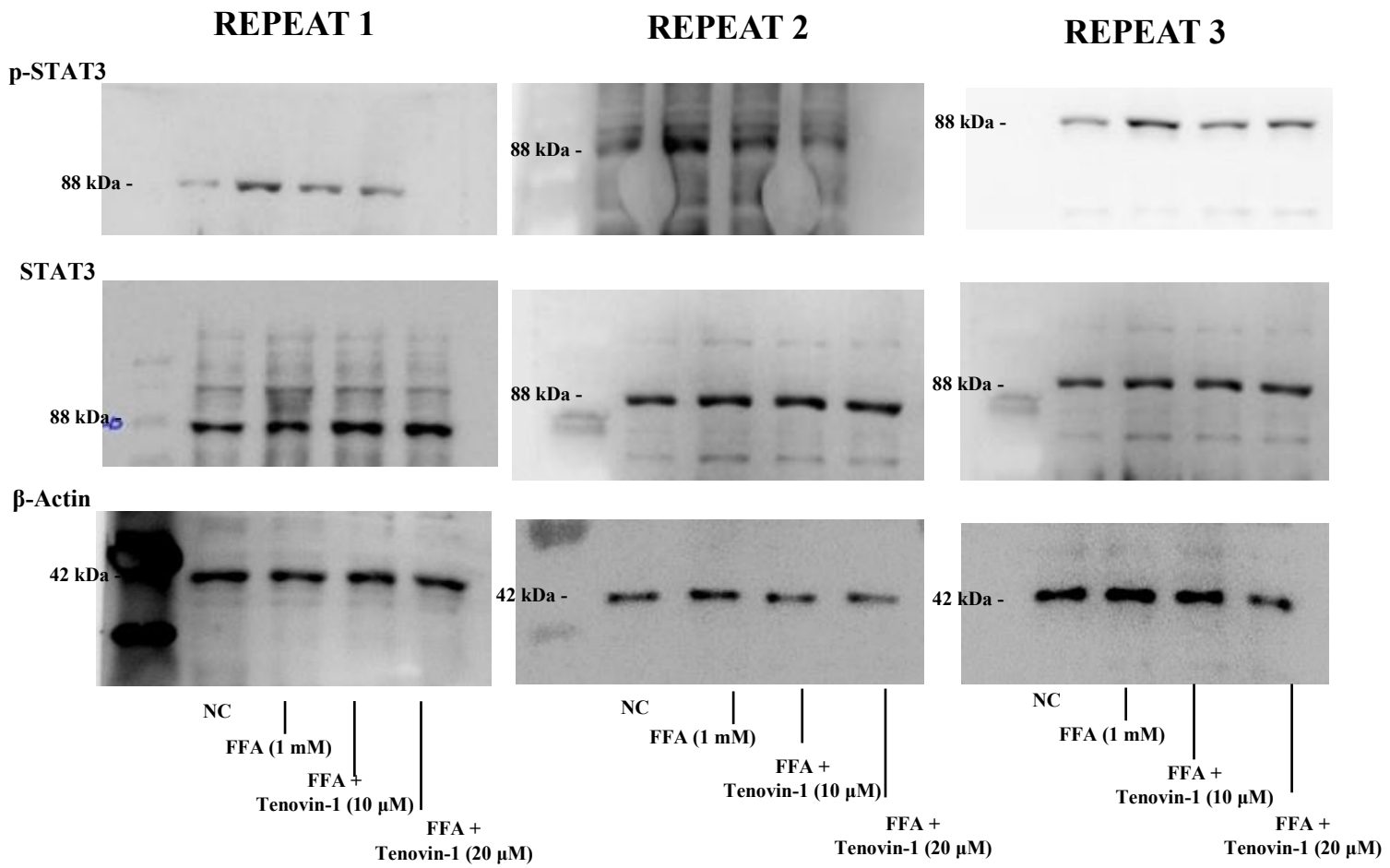
**Figure S3 H:** Whole blot images of p-C-JUN and C-JUN (43 kDa), JNK-1 and p-JNK (46 kDa), p-STAT3 and STAT3 (88 kDa) and β-Actin (42 kDa) as represented in Figure 8A.

I



**Figure S3I:** Whole blot of p-C-JUN and C-JUN (43 kDa), JNK-1 and p-JNK (46 kDa), and  $\beta$ -Actin (42 kDa) as represented in Figure 8C performed in 3 repeats.

**J**



**Figure S3 J:** Whole blot images of p-STAT3 and STAT3 (88 kDa) and  $\beta$ -Actin (42 kDa) as represented in Figure 8C performed in 3 repeats.