

Fig. S1

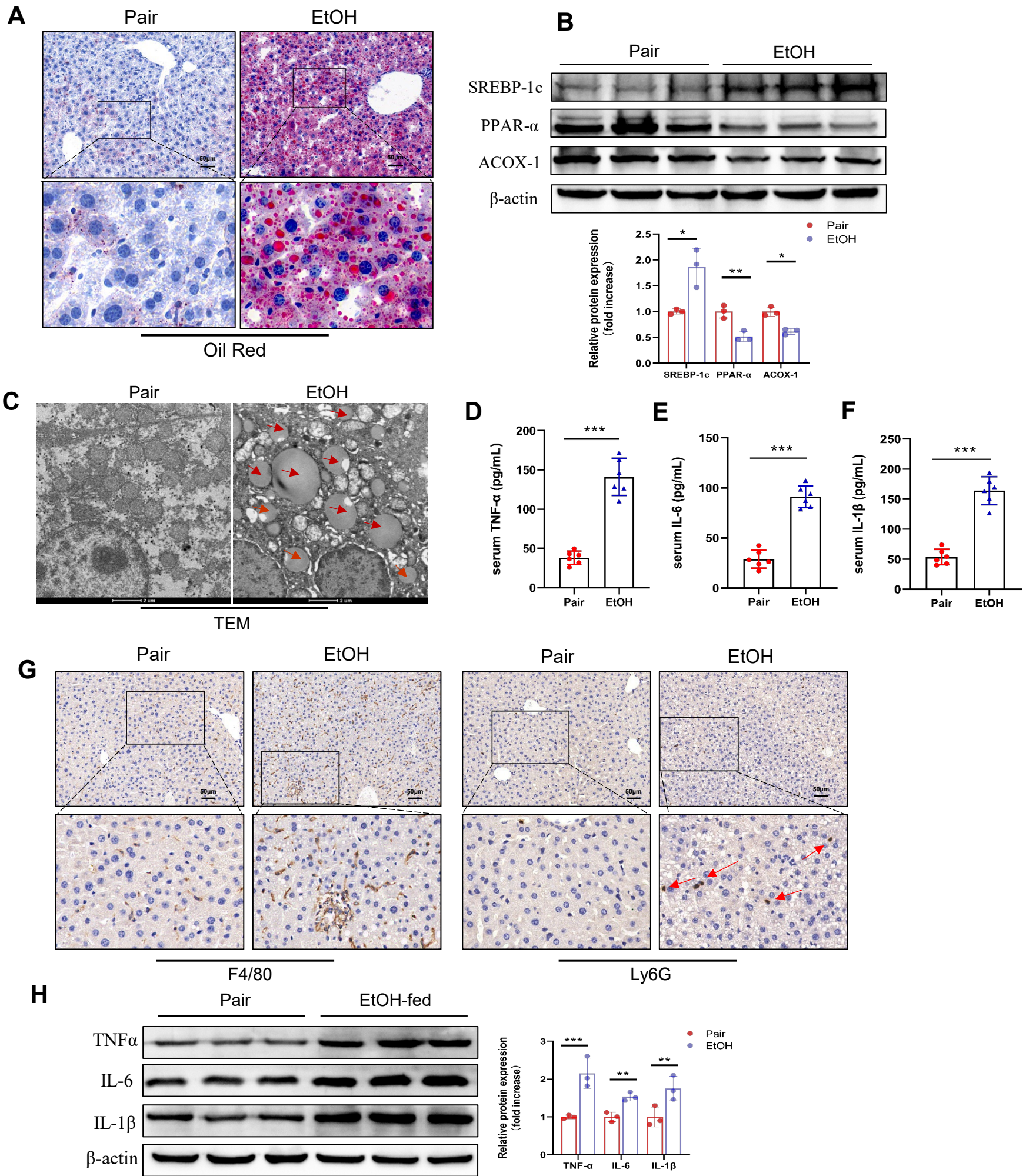
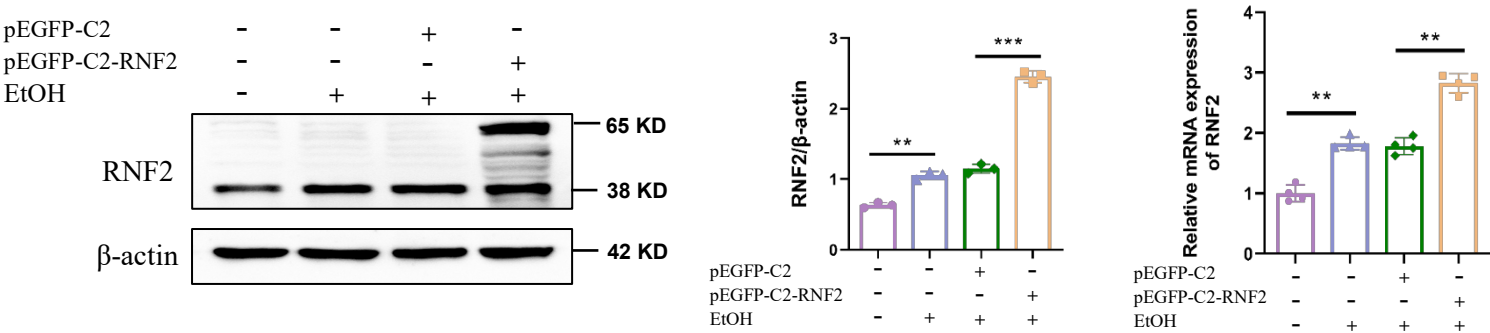


Figure S1. EtOH induced lipid accumulation and an inflammatory response in the livers of ALD mice. A. Frozen liver sections were stained with Oil Red O. B. Protein expression levels of PPAR- α , ACOX-1 and SREBP-1c in mouse liver tissues. C. Changes in the intracellular structure were observed via TEM. The arrow points to lipid droplets. D, E, F. Serum levels of IL-1 β , TNF- α and IL-6 in pair group and EtOH group. G. IHC staining of F4/80 and Ly6G in the livers of mice in pair group and EtOH group. H. Protein expression levels of IL-1 β , TNF- α and IL-6 in mouse liver tissues. The experiments were performed three times independently. * $P < 0.05$, ** $P < 0.01$, *** $P < 0.001$ compared with the pair group..

Fig. S2

A



B

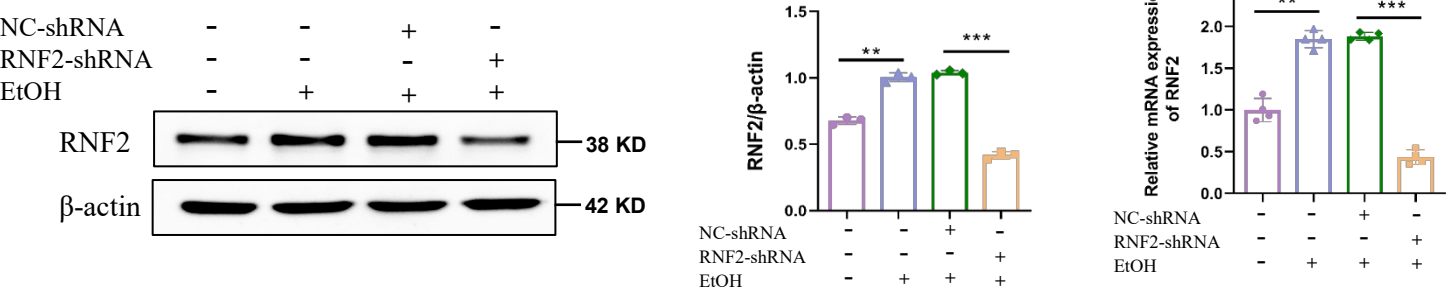
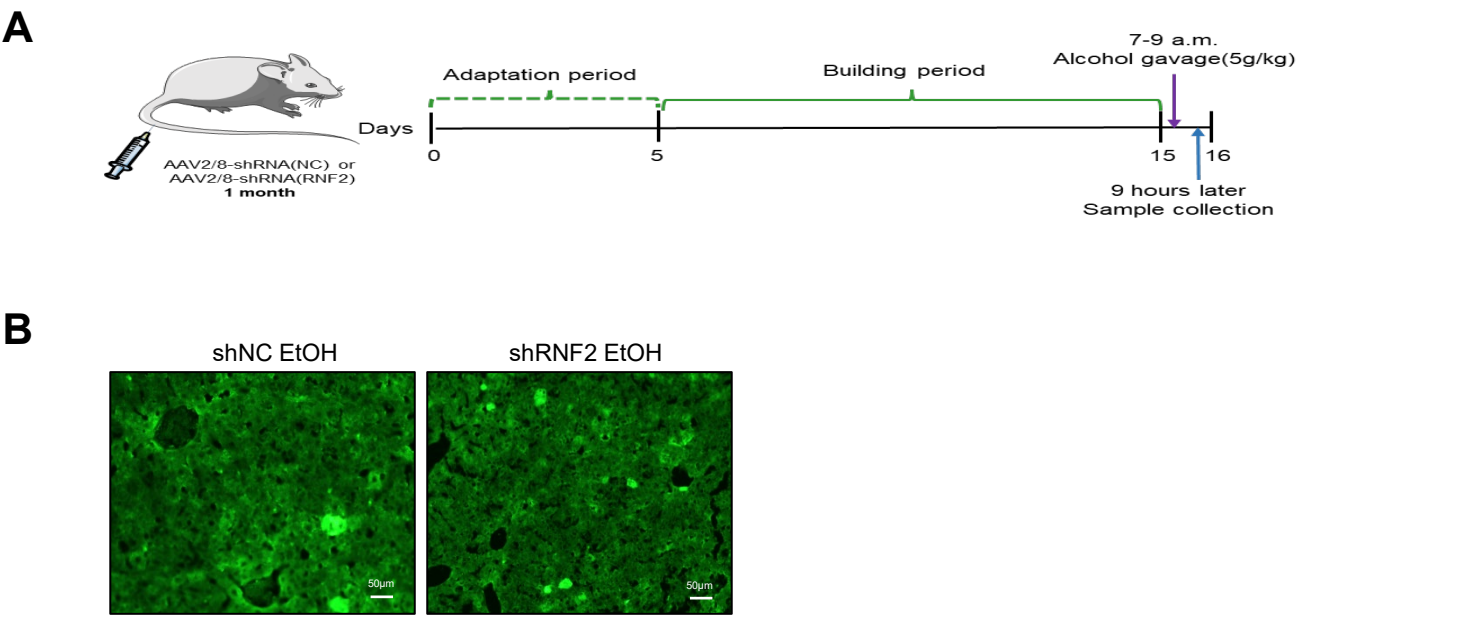


Figure S2. The efficiency of RNF2 overexpression and knockdown.
A. The mRNA and protein expression levels of RNF2 in pEGFP-C2- or pEGFP-C2-RNF2-transfected AML-12 cells treated with EtOH.
B. The protein and mRNA expression levels of RNF2 in NC-shRNA- or RNF2-shRNA-infected AML-12 cells treated with EtOH.

Fig. S3



A. Schematic of the model construction process.
B. Fluorescence imaging confirmed that AAV8-shRNA (RNF2) was successfully localized to the liver and was successfully expressed.